

Anti-IL17F antibody (81-130) (STJ99010)

STJ99010

GENERAL INFORMATION

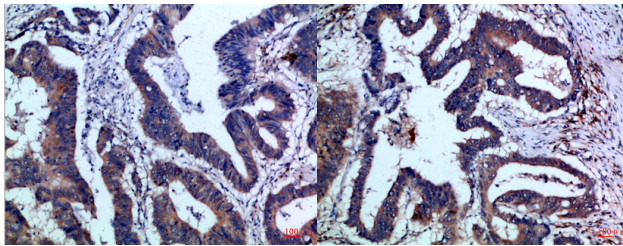
Product Type	Primary antibodies
Short Description	Rabbit polyclonal antibody anti-Interleukin-17f (81-130) is suitable for use in Immunohistochemistry, Immunofluorescence and ELISA research applications.
Applications	IHC-P, IF-P, ELISA
Host/Source	Rabbit
Reactivity	Human, Rat, Mouse

PRODUCT PROPERTIES

Clonality	Polyclonal
Clone ID	
Concentration	1 mg/mL
Conjugation	Unconjugated
Purification	The antibody was affinity-purified from rabbit anti-serum by affinity-chromatography.
Dilution Range	IHC-P 1:50-200 ELISA 1:10000-20000
Formulation	PBS, 50% Glycerol, 0.5% BSA and 0.02% Sodium Azide.
Isotype	IgG
Storage	Store at -20°C for up to 1 year from the date of receipt, and avoid repeat freeze-thaw cycles.
Instruction	

TARGET INFORMATION

Gene ID	112744
Gene Symbol	IL17F
Uniprot ID	IL17F_HUMAN
Immunogen	Synthetic peptide from human protein at amino acid range: 81-130
Immunogen Region	81-130
Specificity	IL17F polyclonal antibody (Interleukin-17f) binds to endogenous Interleukin-17f at the amino acid region 81-130.
Immunogen Sequence	



Immunohistochemical analysis of paraffin-embedded Human-colon-cancer, antibody was diluted at 1:100

Immunohistochemical analysis of paraffin-embedded Human-colon-cancer, antibody was diluted at 1:100

This product is suitable for in-vitro studies under the RESEARCH USE ONLY [RUO] licence. This product must not be used as for diagnostic or other medical purposes.
St John's Laboratory Ltd, Knowledge Dock Business Centre, University Way, London, E16 2RD | Tel: 0208 223 3081