

## Anti-CD158f1/2 antibody (31-80) (STJ98997)

STJ98997

### GENERAL INFORMATION

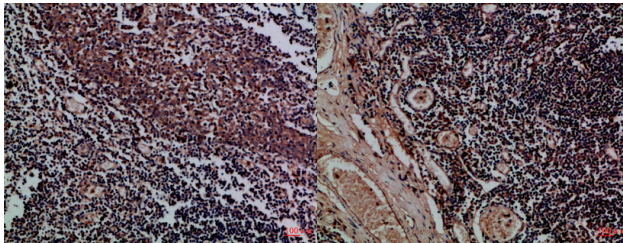
<b>Product Type</b>	Primary antibodies
<b>Short Description</b>	Rabbit polyclonal antibody anti-Killer cell immunoglobulin-like receptor 2DL5A and Killer cell immunoglobulin-like receptor 2DL5B (31-80) is suitable for use in Immunohistochemistry, Immunofluorescence and ELISA research applications.
<b>Applications</b>	IHC-P, IF-P, ELISA
<b>Host/Source</b>	Rabbit
<b>Reactivity</b>	Human, Rat, Mouse

### PRODUCT PROPERTIES

<b>Clonality</b>	Polyclonal
<b>Clone ID</b>	
<b>Concentration</b>	1 mg/mL
<b>Conjugation</b>	Unconjugated
<b>Purification</b>	The antibody was affinity-purified from rabbit anti-serum by affinity-chromatography.
<b>Dilution</b>	IHC-P 1:50-200
<b>Range</b>	ELISA 1:10000-20000
<b>Formulation</b>	PBS, 50% Glycerol, 0.5% BSA and 0.02% Sodium Azide.
<b>Isotype</b>	IgG
<b>Storage</b>	Store at -20°C for up to 1 year from the date of receipt, and avoid repeat freeze-thaw cycles.
<b>Instruction</b>	

### TARGET INFORMATION

<b>Gene ID</b>	<a href="#">57292</a>
	<a href="#">NA</a>
<b>Gene Symbol</b>	<a href="#">KIR2DL5A</a> <a href="#">KIR2DL5B</a>
<b>Uniprot ID</b>	<a href="#">K12LA_HUMAN</a> <a href="#">K12LB_HUMAN</a>
<b>Immunogen</b>	Synthetic peptide from human protein at amino acid range: 31-80
<b>Immunogen Region</b>	31-80
<b>Specificity</b>	CD158f1/2 polyclonal antibody (Killer cell immunoglobulin-like receptor 2DL5A and Killer cell immunoglobulin-like receptor 2DL5B) binds to endogenous Killer cell immunoglobulin-like receptor 2DL5A and Killer cell immunoglobulin-like receptor 2DL5B at
<b>Immunogen Sequence</b>	



Immunohistochemical analysis of paraffin-embedded Human-tonsil, antibody was diluted at 1:100

Immunohistochemical analysis of paraffin-embedded Human-tonsil, antibody was diluted at 1:100

This product is suitable for in-vitro studies under the RESEARCH USE ONLY [RUO] licence. This product must not be used as for diagnostic or other medical purposes.  
St John's Laboratory Ltd, Knowledge Dock Business Centre, University Way, London, E16 2RD | Tel: 0208 223 3081