

Anti-CD247 antibody (51-100) (STJ98995)

STJ98995

GENERAL INFORMATION

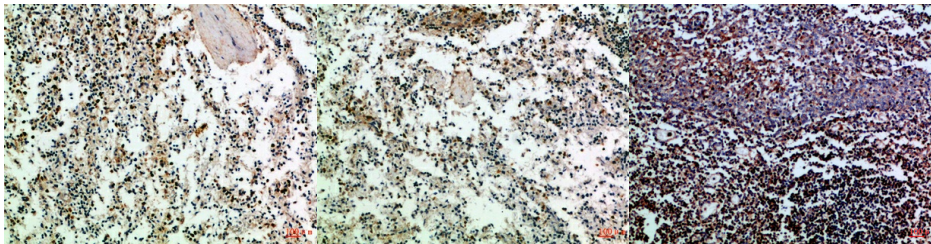
Product Type	Primary antibodies
Short Description	Rabbit polyclonal antibody anti-T-Cell Surface Glycoprotein Cd3 Zeta Chain (51-100) is suitable for use in Immunohistochemistry, Immunofluorescence and ELISA research applications.
Applications	IHC-P, IF-P, ELISA
Host/Source	Rabbit
Reactivity	Human, Rat, Mouse

PRODUCT PROPERTIES

Clonality	Polyclonal
Clone ID	
Concentration	1 mg/mL
Conjugation	Unconjugated
Purification	The antibody was affinity-purified from rabbit anti-serum by affinity-chromatography.
Dilution Range	IHC-P 1:50-200 ELISA 1:10000-20000
Formulation	PBS, 50% Glycerol, 0.5% BSA and 0.02% Sodium Azide.
Isotype	IgG
Storage	Store at -20°C for up to 1 year from the date of receipt, and avoid repeat freeze-thaw cycles.
Instruction	

TARGET INFORMATION

Gene ID	919
Gene Symbol	CD247
Uniprot ID	CD3Z_HUMAN
Immunogen	Synthetic peptide from human protein at amino acid range: 51-100
Immunogen Region	51-100
Specificity	CD247 polyclonal antibody (T-Cell Surface Glycoprotein Cd3 Zeta Chain) binds to endogenous T-Cell Surface Glycoprotein Cd3 Zeta Chain at the amino acid region 51-100.
Immunogen Sequence	



Immunohistochemical analysis of paraffin-embedded Human-spleen, antibody was diluted at 1:100

Immunohistochemical analysis of paraffin-embedded Human-spleen, antibody was diluted at 1:100

Immunohistochemical analysis of paraffin-embedded Human-tonsil, antibody was diluted at 1:100

This product is suitable for in-vitro studies under the RESEARCH USE ONLY [RUO] licence. This product must not be used as for diagnostic or other medical purposes.
 St John's Laboratory Ltd, Knowledge Dock Business Centre, University Way, London, E16 2RD | Tel: 0208 223 3081