

Anti-CD66a/b/c antibody (130-190) (STJ98993)

STJ98993

GENERAL INFORMATION

Product Type	Primary antibodies
Short Description	Rabbit polyclonal antibody anti-Carcinoembryonic antigen-related cell adhesion molecule 1 and Carcinoembryonic antigen-related cell adhesion molecule 6 and Carcinoembryonic antigen-related cell adhesion molecule 8 (130-190) is suitable for use in Imm
Applications	IHC-P, IF-P, ELISA
Host/Source	Rabbit
Reactivity	Human, Rat, Mouse

PRODUCT PROPERTIES

Clonality	Polyclonal
Clone ID	
Concentration	1 mg/mL
Conjugation	Unconjugated
Purification	The antibody was affinity-purified from rabbit anti-serum by affinity-chromatography.
Dilution	IHC-P 1:50-200
Range	ELISA 1:10000-20000
Formulation	PBS, 50% Glycerol, 0.5% BSA and 0.02% Sodium Azide.
Isotype	IgG
Storage	Store at-20°C for up to 1 year from the date of receipt, and avoid repeat freeze-thaw cycles.
Instruction	

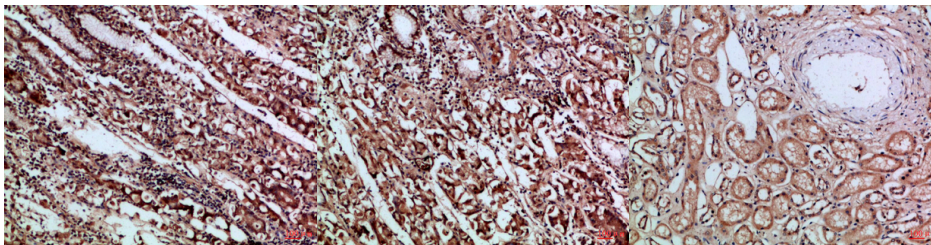
TARGET INFORMATION

Gene ID [634](#)
[4680](#)
[1088](#)
[CEACAM1](#)
[CEACAM6](#)
[CEAM1_HUMAN](#)
[CEAM6_HUMAN](#)
[CEAM8_HUMAN](#)

Immunogen Synthetic peptide from human protein at amino acid range: 130-190
Immunogen Region 130-190

Specificity CD66a/b/c polyclonal antibody (Carcinoembryonic antigen-related cell adhesion molecule 1 and Carcinoembryonic antigen-related cell adhesion molecule 6 and Carcinoembryonic antigen-related cell adhesion molecule 8) binds to endogenous Carcinoembryonic

Immunogen Sequence



Immunohistochemical analysis of paraffin-embedded Human-stomach, antibody was diluted at 1:100

Immunohistochemical analysis of paraffin-embedded Human-stomach, antibody was diluted at 1:100

Immunohistochemical analysis of paraffin-embedded Human-kidney, antibody was diluted at 1:100

This product is suitable for in-vitro studies under the RESEARCH USE ONLY [RUO] licence. This product must not be used as for diagnostic or other medical purposes.
 St John's Laboratory Ltd, Knowledge Dock Business Centre, University Way, London, E16 2RD | Tel: 0208 223 3081