

Anti-CD24 antibody (30-60) (STJ98990)

STJ98990

GENERAL INFORMATION

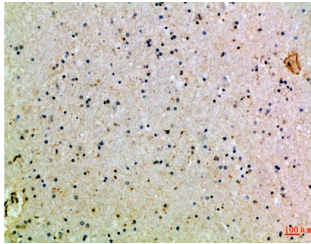
| | |
|--------------------------|---|
| Product Type | Primary antibodies |
| Short Description | Rabbit polyclonal antibody anti-Signal Transducer Cd24 (30-60) is suitable for use in Immunohistochemistry, Immunofluorescence and ELISA research applications. |
| Applications | IHC-P, IF-P, ELISA |
| Host/Source | Rabbit |
| Reactivity | Human, Rat, Mouse |

PRODUCT PROPERTIES

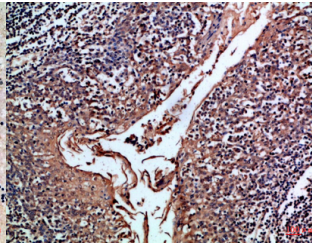
| | |
|----------------------------|--|
| Clonality | Polyclonal |
| Clone ID | |
| Concentration | 1 mg/mL |
| Conjugation | Unconjugated |
| Purification | The antibody was affinity-purified from rabbit anti-serum by affinity-chromatography. |
| Dilution Range | IHC-P 1:50-200 ELISA 1:10000-20000 |
| Formulation | PBS, 50% Glycerol, 0.5% BSA and 0.02% Sodium Azide. |
| Isotype | IgG |
| Storage Instruction | Store at -20°C for up to 1 year from the date of receipt, and avoid repeat freeze-thaw cycles. |

TARGET INFORMATION

| | |
|---------------------------|--|
| Gene ID | 100133941 |
| Gene Symbol | CD24 |
| Uniprot ID | CD24_HUMAN |
| Immunogen | Synthetic peptide from human protein at amino acid range: 30-60 |
| Immunogen Region | 30-60 |
| Specificity | CD24 polyclonal antibody (Signal Transducer Cd24) binds to endogenous Signal Transducer Cd24 at the amino acid region 30-60. |
| Immunogen Sequence | |



Immunohistochemical analysis of paraffin-embedded Human-brain, antibody was diluted at 1:100



Immunohistochemical analysis of paraffin-embedded Human-tonsil, antibody was diluted at 1:100

This product is suitable for in-vitro studies under the RESEARCH USE ONLY [RUO] licence. This product must not be used as for diagnostic or other medical purposes.
St John's Laboratory Ltd, Knowledge Dock Business Centre, University Way, London, E16 2RD | Tel: 0208 223 3081