

Anti-CD1A/B antibody (220-270) (STJ98989)

STJ98989

GENERAL INFORMATION

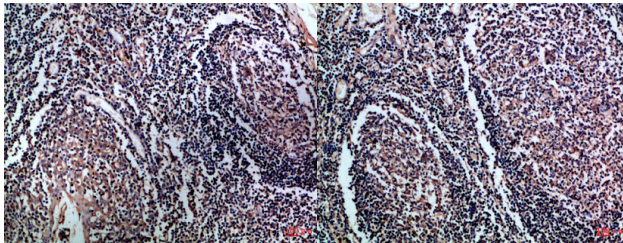
Product Type	Primary antibodies
Short Description	Rabbit polyclonal antibody anti-T-cell surface glycoprotein CD1a and T-cell surface glycoprotein CD1b (220-270) is suitable for use in Immunohistochemistry, Immunofluorescence and ELISA research applications.
Applications	IHC-P, IF-P, ELISA
Host/Source	Rabbit
Reactivity	Human, Rat, Mouse

PRODUCT PROPERTIES

Clonality	Polyclonal
Clone ID	
Concentration	1 mg/mL
Conjugation	Unconjugated
Purification	The antibody was affinity-purified from rabbit anti-serum by affinity-chromatography.
Dilution	IHC-P 1:50-200
Range	ELISA 1:10000-20000
Formulation	PBS, 50% Glycerol, 0.5% BSA and 0.02% Sodium Azide.
Isotype	IgG
Storage	Store at -20°C for up to 1 year from the date of receipt, and avoid repeat freeze-thaw cycles.
Instruction	

TARGET INFORMATION

Gene ID	909 910
Gene Symbol	CD1A CD1B
Uniprot ID	CD1A_HUMAN CD1B_HUMAN
Immunogen	Synthetic peptide from human protein at amino acid range: 220-270
Immunogen Region	220-270
Specificity	CD1A/B polyclonal antibody (T-cell surface glycoprotein CD1a and T-cell surface glycoprotein CD1b) binds to endogenous T-cell surface glycoprotein CD1a and T-cell surface glycoprotein CD1b at the amino acid region 220-270.
Immunogen Sequence	



Immunohistochemical analysis of paraffin-embedded Human-tonsil, antibody was diluted at 1:100

Immunohistochemical analysis of paraffin-embedded Human-tonsil, antibody was diluted at 1:100

This product is suitable for in-vitro studies under the RESEARCH USE ONLY [RUO] licence. This product must not be used as for diagnostic or other medical purposes.
St John's Laboratory Ltd, Knowledge Dock Business Centre, University Way, London, E16 2RD | Tel: 0208 223 3081