

Anti-PMEPA1 antibody (240-287) (STJ98968)

STJ98968

GENERAL INFORMATION

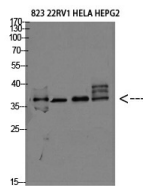
Product Type	Primary antibodies
Short Description	Rabbit polyclonal antibody anti-Protein Tmepai (240-287) is suitable for use in Western Blot and ELISA research applications.
Applications	WB, ELISA
Host/Source	Rabbit
Reactivity	Human, Rat, Mouse

PRODUCT PROPERTIES

Clonality	Polyclonal
Clone ID	
Concentration	1 mg/mL
Conjugation	Unconjugated
Purification	The antibody was affinity-purified from rabbit anti-serum by affinity-chromatography.
Dilution Range	WB 1:500-2000 ELISA 1:10000-20000
Formulation	PBS, 50% Glycerol, 0.5% BSA and 0.02% Sodium Azide.
Isotype	IgG
Storage Instruction	Store at -20°C for up to 1 year from the date of receipt, and avoid repeat freeze-thaw cycles.

TARGET INFORMATION

Gene ID	56937
Gene Symbol	PMEPA1
Uniprot ID	PMEPA_HUMAN
Immunogen	Synthetic peptide from human protein at amino acid range: 240-287
Immunogen Region	240-287
Specificity	PMEPA1 polyclonal antibody (Protein Tmepai) binds to endogenous Protein Tmepai at the amino acid region 240-287.
Immunogen Sequence	



Western blot analysis of 823 22RV1 HELA HEPG2 Cell Lysate, antibody was diluted at 1:2000. Secondary antibody was diluted at 1:20000

This product is suitable for in-vitro studies under the RESEARCH USE ONLY [RUO] licence. This product must not be used as for diagnostic or other medical purposes.
St John's Laboratory Ltd, Knowledge Dock Business Centre, University Way, London, E16 2RD | Tel: 0208 223 3081