

Anti-PLK2 antibody (377-451) (STJ98963)

STJ98963

GENERAL INFORMATION

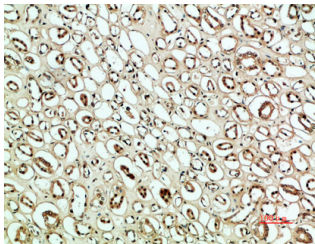
Product Type	Primary antibodies
Short Description	Rabbit polyclonal antibody anti-Serine/Threonine-Protein Kinase Plk2 (377-451) is suitable for use in Immunohistochemistry, Immunofluorescence and ELISA research applications.
Applications	IHC-P, IF-P, ELISA
Host/Source	Rabbit
Reactivity	Human, Rat

PRODUCT PROPERTIES

Clonality	Polyclonal
Clone ID	
Concentration	1 mg/mL
Conjugation	Unconjugated
Purification	The antibody was affinity-purified from rabbit anti-serum by affinity-chromatography.
Dilution Range	IHC-P 1:50-200 ELISA 1:10000-20000
Formulation	PBS, 50% Glycerol, 0.5% BSA and 0.02% Sodium Azide.
Isotype	IgG
Storage	Store at -20°C for up to 1 year from the date of receipt, and avoid repeat freeze-thaw cycles.
Instruction	

TARGET INFORMATION

Gene ID	10769
Gene Symbol	PLK2
Uniprot ID	PLK2_HUMAN
Immunogen	Synthetic peptide from human protein at amino acid range: 377-451
Immunogen Region	377-451
Specificity	PLK2 polyclonal antibody (Serine/Threonine-Protein Kinase Plk2) binds to endogenous Serine/Threonine-Protein Kinase Plk2 at the amino acid region 377-451.
Immunogen Sequence	



Immunohistochemical analysis of paraffin-embedded human kidney, antibody was diluted at 1:200

This product is suitable for in-vitro studies under the RESEARCH USE ONLY [RUO] licence. This product must not be used as for diagnostic or other medical purposes.
St John's Laboratory Ltd, Knowledge Dock Business Centre, University Way, London, E16 2RD | Tel: 0208 223 3081