

Anti-CYCS antibody (1-69) (STJ98953)

STJ98953

GENERAL INFORMATION

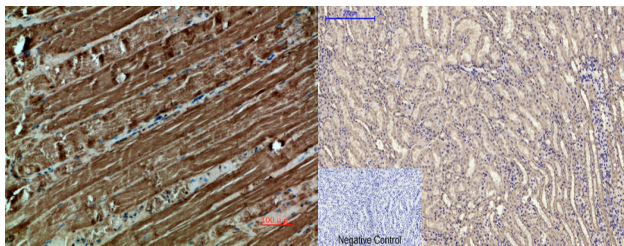
Product Type	Primary antibodies
Short Description	Rabbit polyclonal antibody anti-Cytochrome C (1-69) is suitable for use in Immunofluorescence, Immunocytochemistry, Western Blot, Immunohistochemistry and ELISA research applications.
Applications	IF, ICC, WB, IHC-P, ELISA
Host/Source	Rabbit
Reactivity	Human, Mouse, Rat

PRODUCT PROPERTIES

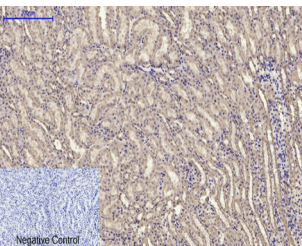
Clonality	Polyclonal
Clone ID	
Concentration	1 mg/mL
Conjugation	Unconjugated
Purification	The antibody was affinity-purified from rabbit anti-serum by affinity-chromatography.
Dilution Range	IF 1:50-200 WB 1:500-2000 IHC-P 1:500-200 ELISA 1:10000-20000
Formulation	PBS, 50% Glycerol, 0.5% BSA and 0.02% Sodium Azide.
Isotype	IgG
Storage Instruction	Store at -20°C for up to 1 year from the date of receipt, and avoid repeat freeze-thaw cycles.

TARGET INFORMATION

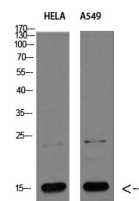
Gene ID	54205
Gene Symbol	CYCS
Uniprot ID	CYC_HUMAN
Immunogen	Synthetic peptide from human protein at amino acid range: 1-69
Immunogen Region	1-69
Specificity	CYCS polyclonal antibody (Cytochrome C) binds to endogenous Cytochrome C at the amino acid region 1-69.
Immunogen Sequence	



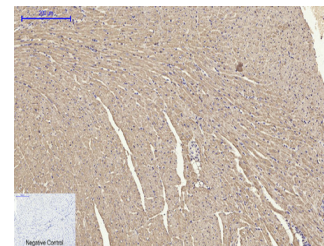
Immunohistochemical analysis of paraffin-embedded human-muscle, antibody was diluted at 1:200



Immunohistochemical analysis of paraffin-embedded Mouse-kidney tissue. 1. CYCS Polyclonal Antibody was diluted at 1:200 (4°C, overnight). 2. Sodium citrate pH 6.0 was used for antibody retrieval (>98°C, 20min). 3. Secondary antibody was diluted at 1:200 (room temperature, 30min). Negative control was used by secondary antibody only.



Western blot analysis of HELA, A549 Cell Lysate, antibody was diluted at 1:1000. Secondary antibody was diluted at 1:20000



Immunohistochemical analysis of paraffin-embedded Mouse-heart tissue. 1. CYCS Polyclonal Antibody was diluted at 1:200 (4°C, overnight). 2. Sodium citrate pH 6.0 was used for antibody retrieval (>98°C, 20min). 3. Secondary antibody was diluted at 1:200 (room temperature, 30min). Negative control was used by secondary antibody only.

This product is suitable for in-vitro studies under the RESEARCH USE ONLY [RUO] licence. This product must not be used as for diagnostic or other medical purposes.
St John's Laboratory Ltd, Knowledge Dock Business Centre, University Way, London, E16 2RD | Tel: 0208 223 3081