

Anti-KDR antibody (1268-1341) (STJ98952)

STJ98952

GENERAL INFORMATION

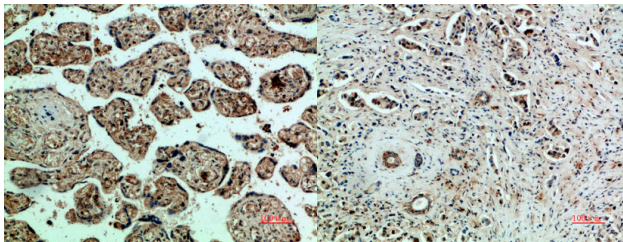
Product Type	Primary antibodies
Short Description	Rabbit polyclonal antibody anti-Vascular Endothelial Growth Factor Receptor 2 (1268-1341) is suitable for use in Western Blot, Immunohistochemistry, Immunofluorescence and ELISA research applications.
Applications	WB, IHC-P, IF-P, ELISA
Host/Source	Rabbit
Reactivity	Human, Rat, Mouse

PRODUCT PROPERTIES

Clonality	Polyclonal
Clone ID	
Concentration	1 mg/mL
Conjugation	Unconjugated
Purification	The antibody was affinity-purified from rabbit anti-serum by affinity-chromatography.
Dilution Range	WB 1:500-1:2000 IHCf:1:50-300 ELISA 1:10000-20000
Formulation	PBS, 50% Glycerol, 0.5% BSA and 0.02% Sodium Azide.
Isotype	IgG
Storage Instruction	Store at -20°C for up to 1 year from the date of receipt, and avoid repeat freeze-thaw cycles.

TARGET INFORMATION

Gene ID	3791
Gene Symbol	KDR
Uniprot ID	VGFR2_HUMAN
Immunogen	Synthetic peptide from human protein at amino acid range: 1268-1341
Immunogen Region	1268-1341
Specificity	KDR polyclonal antibody (Vascular Endothelial Growth Factor Receptor 2) binds to endogenous Vascular Endothelial Growth Factor Receptor 2 at the amino acid region 1268-1341.
Immunogen Sequence	



Immunohistochemical analysis of paraffin-embedded human-placenta, antibody was diluted at 1:200

Immunohistochemical analysis of paraffin-embedded human-breast-cancer, antibody was diluted at 1:200

This product is suitable for in-vitro studies under the RESEARCH USE ONLY [RUO] licence. This product must not be used as for diagnostic or other medical purposes.
St John's Laboratory Ltd, Knowledge Dock Business Centre, University Way, London, E16 2RD | Tel: 0208 223 3081