

Anti-SLC6A1 antibody (Internal) (STJ98949)

STJ98949

GENERAL INFORMATION

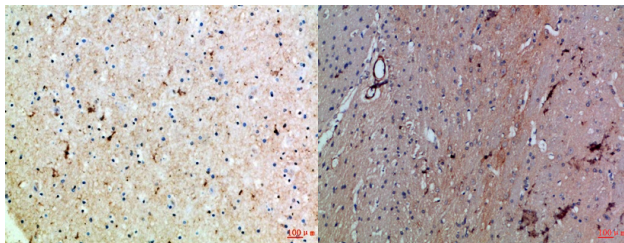
Product Type	Primary antibodies
Short Description	Rabbit polyclonal antibody anti-Sodium-And Chloride-Dependent Gaba Transporter 1 (Internal) is suitable for use in Western Blot, Immunohistochemistry, Immunofluorescence and ELISA research applications.
Applications	WB, IHC-P, IF-P, ELISA
Host/Source	Rabbit
Reactivity	Human, Mouse, Rat

PRODUCT PROPERTIES

Clonality	Polyclonal
Clone ID	
Concentration	1 mg/mL
Conjugation	Unconjugated
Purification	The antibody was affinity-purified from rabbit anti-serum by affinity-chromatography.
Dilution Range	WB 1:500-2000 IHC-P 1:500-200 ELISA 1:10000-20000
Formulation	PBS, 50% Glycerol, 0.5% BSA and 0.02% Sodium Azide.
Isotype	IgG
Storage Instruction	Store at -20°C for up to 1 year from the date of receipt, and avoid repeat freeze-thaw cycles.

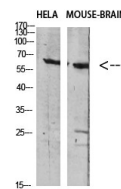
TARGET INFORMATION

Gene ID	6529
Gene Symbol	SLC6A1
Uniprot ID	SC6A1_HUMAN
Immunogen	The antiserum was produced against synthesized peptide derived from the Internal region of human SLC6A1 at amino acid range 170-220
Immunogen Region	Internal
Specificity	SLC6A1 polyclonal antibody (Sodium-And Chloride-Dependent Gaba Transporter 1) binds to endogenous Sodium-And Chloride-Dependent Gaba Transporter 1 at the amino acid region Internal.
Immunogen Sequence	



Immunohistochemical analysis of paraffin-embedded Human-brain, antibody was diluted at 1:100

Immunohistochemical analysis of paraffin-embedded Rat-brain, antibody was diluted at 1:100



Western blot analysis of HELA mouse brain Cell Lysate using antibody. Secondary antibody was diluted at 1:20000

This product is suitable for in-vitro studies under the RESEARCH USE ONLY [RUO] licence. This product must not be used as for diagnostic or other medical purposes.
St John's Laboratory Ltd, Knowledge Dock Business Centre, University Way, London, E16 2RD | Tel: 0208 223 3081