

## Anti-Tubulin Alpha antibody (380-420) (STJ98948)

STJ98948

### GENERAL INFORMATION

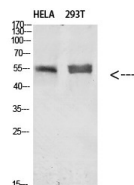
<b>Product Type</b>	Primary antibodies
<b>Short Description</b>	Rabbit polyclonal antibody anti-Tubulin alpha (380-420) is suitable for use in Western Blot and ELISA research applications.
<b>Applications</b>	WB, ELISA
<b>Host/Source</b>	Rabbit
<b>Reactivity</b>	Human, Mouse, Rat

### PRODUCT PROPERTIES

<b>Clonality</b>	Polyclonal
<b>Clone ID</b>	
<b>Concentration</b>	1 mg/mL
<b>Conjugation</b>	Unconjugated
<b>Purification</b>	The antibody was affinity-purified from rabbit anti-serum by affinity-chromatography.
<b>Dilution</b>	WB 1:500-2000
<b>Range</b>	ELISA 1:10000-20000
<b>Formulation</b>	PBS, 50% Glycerol, 0.5% BSA and 0.02% Sodium Azide.
<b>Isotype</b>	IgG
<b>Storage Instruction</b>	Store at -20°C for up to 1 year from the date of receipt, and avoid repeat freeze-thaw cycles.

### TARGET INFORMATION

<b>Gene ID</b>	<a href="#">7846</a> <a href="#">10376</a> <a href="#">84790</a> <a href="#">TUBA1A</a> <a href="#">TUBA1B</a> <a href="#">TBA1A_HUMAN</a> <a href="#">TBA1B_HUMAN</a> <a href="#">TBA1C_HUMAN</a>
<b>Immunogen</b>	Synthetic peptide from human protein at amino acid range: 380-420
<b>Immunogen Region</b>	380-420
<b>Specificity</b>	Tubulin Alpha polyclonal antibody (Tubulin alpha-1A chain and Tubulin alpha-1B chain and Tubulin alpha-1C chain and OBSOLETE and Tubulin alpha-4A chain and Tubulin alpha-8 chain) binds to endogenous Tubulin alpha-1A chain and Tubulin alpha-1B chain a
<b>Immunogen Sequence</b>	



Western blot analysis of HELA 293T Cell Lysate using antibody. Secondary antibody was diluted at 1:20000