

Anti-ATG5 antibody (STJ98903)

STJ98903

GENERAL INFORMATION

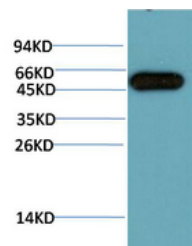
Product Type	Primary antibodies
Short Description	Mouse monoclonal antibody anti-Autophagy Protein 5 is suitable for use in Immunofluorescence, Immunocytochemistry, Western Blot, Immunohistochemistry and Immunoprecipitation research applications.
Applications	IF, ICC, WB, IHC-P, IP
Host/Source	Mouse
Reactivity	Human, Mouse, Rat

PRODUCT PROPERTIES

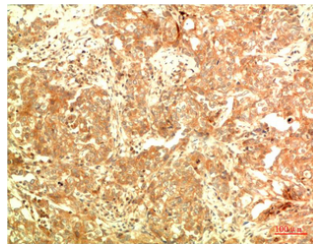
Clonality	Monoclonal
Clone ID	
Concentration	1 mg/mL
Conjugation	Unconjugated
Purification	The antibody was isolated from ascitic fluid by immunoaffinity chromatography using antigens coupled to agarose beads.
Dilution Range	IF 1:50-200 IP 1:50-200 WB 1:500-2000 IHC-P 1:50-300
Formulation	PBS, 50% Glycerol, 0.5% BSA and 0.02% Sodium Azide.
Isotype	
Storage Instruction	Store at -20°C for up to 1 year from the date of receipt, and avoid repeat freeze-thaw cycles.

TARGET INFORMATION

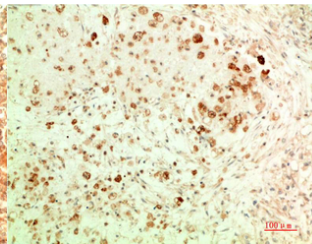
Gene ID	9474
Gene Symbol	ATG5
Uniprot ID	ATG5_HUMAN
Immunogen	Recombinant Protein of ATG5
Immunogen Region	
Specificity	ATG5 monoclonal antibody (Autophagy Protein 5) binds to endogenous Autophagy Protein 5.
Immunogen Sequence	



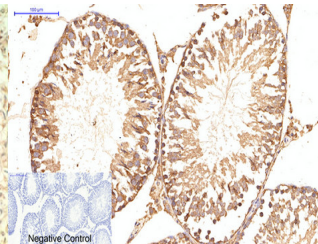
Western blot analysis of HeLa Cell Lysate using ATG5 Mouse mAb diluted at 1:10000



Immunohistochemical analysis of paraffin-embedded Human Breast Carcinoma Tissue using ATG5 Mouse mAb diluted at 1:200.



Immunohistochemical analysis of paraffin-embedded Human Ovarian Carcinoma Tissue using ATG5 Mouse mAb diluted at 1:200.



Immunohistochemical analysis of paraffin-embedded Rat-testis tissue. 1. ATG5 Mouse monoclonal antibody (3C7) was diluted at 1:200 (4°C, overnight). 2. Sodium citrate pH 6.0 was used for antibody retrieval (>98°C, 20min). 3. Secondary antibody was diluted at 1:200 (room temperature, 30min). Negative control was used by secondary antibody only.

This product is suitable for in-vitro studies under the RESEARCH USE ONLY [RUO] licence. This product must not be used as for diagnostic or other medical purposes.
St John's Laboratory Ltd, Knowledge Dock Business Centre, University Way, London, E16 2RD | Tel: 0208 223 3081