

## Anti-CBX5 antibody (STJ98895)

STJ98895

### GENERAL INFORMATION

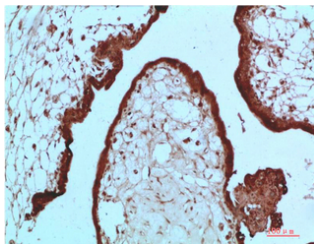
<b>Product Type</b>	Primary antibodies
<b>Short Description</b>	Mouse monoclonal antibody anti-Chromobox Protein Homolog 5 is suitable for use in Immunofluorescence, Immunocytochemistry, Western Blot and Immunohistochemistry research applications.
<b>Applications</b>	IF, ICC, WB, IHC-P
<b>Host/Source</b>	Mouse
<b>Reactivity</b>	Human, Mouse, Rat

### PRODUCT PROPERTIES

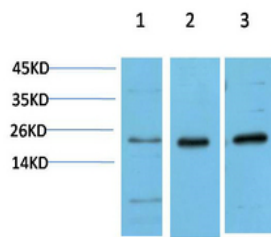
<b>Clonality</b>	Monoclonal
<b>Clone ID</b>	
<b>Concentration</b>	1 mg/mL
<b>Conjugation</b>	Unconjugated
<b>Purification</b>	The antibody was isolated from ascitic fluid by immunoaffinity chromatography using antigens coupled to agarose beads.
<b>Dilution Range</b>	IF 1:50-200 WB 1:500-2000 IHC-P 1:50-300
<b>Formulation</b>	PBS, 50% Glycerol, 0.5% BSA and 0.02% Sodium Azide.
<b>Isotype</b>	
<b>Storage Instruction</b>	Store at -20°C for up to 1 year from the date of receipt, and avoid repeat freeze-thaw cycles.

### TARGET INFORMATION

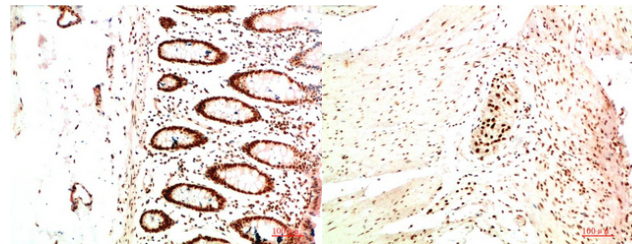
<b>Gene ID</b>	23468
<b>Gene Symbol</b>	CBX5
<b>Uniprot ID</b>	CBX5_HUMAN
<b>Immunogen</b>	Recombinant Protein of HP-1 Alpha
<b>Immunogen Region</b>	
<b>Specificity</b>	CBX5 monoclonal antibody (Chromobox Protein Homolog 5) binds to endogenous Chromobox Protein Homolog 5.
<b>Immunogen Sequence</b>	



Immunohistochemical analysis of paraffin-embedded Human Placenta Tissue using HP-1 Alpha Mouse mAb diluted at 1:200



Western blot analysis of 1) HeLa Cell Lysate, 2) 3T3 Cell Lysate, 3) PC12 Cell Lysate using HP-1 Gamma Alpha Mouse mAb diluted at 1:1000.



Immunohistochemical analysis of paraffin-embedded Human Colon Carcinoma Tissue using HP-1 Alpha Mouse mAb diluted at 1:200

Immunohistochemical analysis of paraffin-embedded Human Colon Carcinoma Tissue using HP-1 Alpha Mouse mAb diluted at 1:200

This product is suitable for in-vitro studies under the RESEARCH USE ONLY [RUO] licence. This product must not be used as for diagnostic or other medical purposes.  
St John's Laboratory Ltd, Knowledge Dock Business Centre, University Way, London, E16 2RD | Tel: 0208 223 3081