

## Anti-MAP2K2 antibody (STJ98874)

STJ98874

### GENERAL INFORMATION

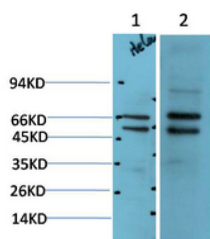
<b>Product Type</b>	Primary antibodies
<b>Short Description</b>	Rabbit polyclonal antibody anti-Dual Specificity Mitogen-Activated Protein Kinase Kinase 2 is suitable for use in Western Blot, Immunohistochemistry and Immunofluorescence research applications.
<b>Applications</b>	WB, IHC-P, IF-P
<b>Host/Source</b>	Rabbit
<b>Reactivity</b>	Human

### PRODUCT PROPERTIES

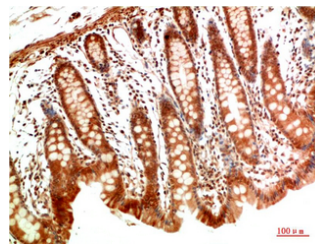
<b>Clonality</b>	Polyclonal
<b>Clone ID</b>	
<b>Concentration</b>	1 mg/mL
<b>Conjugation</b>	Unconjugated
<b>Purification</b>	The antibody was affinity-purified from rabbit anti-serum by affinity-chromatography.
<b>Dilution</b>	WB 1:500-2000
<b>Range</b>	IHC-P 1:50-300
<b>Formulation</b>	PBS, 50% Glycerol, 0.5% BSA and 0.02% Sodium Azide.
<b>Isotype</b>	IgG
<b>Storage</b>	Store at -20°C for up to 1 year from the date of receipt, and avoid repeat freeze-thaw cycles.
<b>Instruction</b>	

### TARGET INFORMATION

<b>Gene ID</b>	5605
<b>Gene Symbol</b>	MAP2K2
<b>Uniprot ID</b>	MP2K2_HUMAN
<b>Immunogen</b>	Recombinant Protein of MEK2
<b>Immunogen Region</b>	
<b>Specificity</b>	MAP2K2 polyclonal antibody (Dual Specificity Mitogen-Activated Protein Kinase Kinase 2) binds to endogenous Dual Specificity Mitogen-Activated Protein Kinase Kinase 2.
<b>Immunogen Sequence</b>	



Western blot analysis of 1) Hela Cell Lysate, 2) 293t Cell Lysate using MEK2 Rabbit pAb diluted at 1:2000.



Immunohistochemical analysis of paraffin-embedded Human Colon Carcinoma Tissue using MEK2 Rabbit pAb diluted at 1:200