

Anti-TNFAIP8L3 antibody (15-45) (STJ98863)

STJ98863

GENERAL INFORMATION

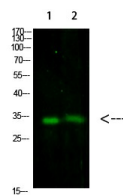
| | |
|--------------------------|---|
| Product Type | Primary antibodies |
| Short Description | Rabbit polyclonal antibody anti-Tumor Necrosis Factor Alpha-Induced Protein 8-Like Protein 3 (15-45) is suitable for use in Western Blot and ELISA research applications. |
| Applications | WB, ELISA |
| Host/Source | Rabbit |
| Reactivity | Human, Rat, Mouse |

PRODUCT PROPERTIES

| | |
|----------------------|--|
| Clonality | Polyclonal |
| Clone ID | |
| Concentration | 1 mg/mL |
| Conjugation | Unconjugated |
| Purification | The antibody was affinity-purified from rabbit anti-serum by affinity-chromatography. |
| Dilution | WB 1:500-2000 |
| Range | ELISA 1:10000-20000 |
| Formulation | PBS, 50% Glycerol, 0.5% BSA and 0.02% Sodium Azide. |
| Isotype | IgG |
| Storage | Store at -20°C for up to 1 year from the date of receipt, and avoid repeat freeze-thaw cycles. |
| Instruction | |

TARGET INFORMATION

| | |
|---------------------------|---|
| Gene ID | 388121 |
| Gene Symbol | TNFAIP8L3 |
| Uniprot ID | TP8L3_HUMAN |
| Immunogen | Synthesized peptide derived from human TNFAIP8L3. at amino acid range: 15-45 |
| Immunogen Region | 15-45 |
| Specificity | TNFAIP8L3 polyclonal antibody (Tumor Necrosis Factor Alpha-Induced Protein 8-Like Protein 3) binds to endogenous Tumor Necrosis Factor Alpha-Induced Protein 8-Like Protein 3 at the amino acid region 15-45. |
| Immunogen Sequence | |



Western blot analysis of 1, 293T 2, mouse-brain cells using primary antibody diluted at 1:1000 (4°C overnight). Secondary antibody: Goat Anti-rabbit IgG IRDye 800 (diluted at 1:5000, 25°C, 1 hour)

This product is suitable for in-vitro studies under the RESEARCH USE ONLY [RUO] licence. This product must not be used as for diagnostic or other medical purposes.
 St John's Laboratory Ltd, Knowledge Dock Business Centre, University Way, London, E16 2RD | Tel: 0208 223 3081