

Anti-RXRG antibody (380-420) (STJ98860)

STJ98860

GENERAL INFORMATION

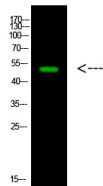
Product Type	Primary antibodies
Short Description	Rabbit polyclonal antibody anti-Retinoic Acid Receptor Rxr-Gamma (380-420) is suitable for use in Western Blot and ELISA research applications.
Applications	WB, ELISA
Host/Source	Rabbit
Reactivity	Human, Rat, Mouse

PRODUCT PROPERTIES

Clonality	Polyclonal
Clone ID	
Concentration	1 mg/mL
Conjugation	Unconjugated
Purification	The antibody was affinity-purified from rabbit anti-serum by affinity-chromatography.
Dilution Range	WB 1:500-2000 ELISA 1:10000-20000
Formulation	PBS, 50% Glycerol, 0.5% BSA and 0.02% Sodium Azide.
Isotype	IgG
Storage	Store at -20°C for up to 1 year from the date of receipt, and avoid repeat freeze-thaw cycles.
Instruction	

TARGET INFORMATION

Gene ID	6258
Gene Symbol	RXRG
Uniprot ID	RXRG_HUMAN
Immunogen	Synthesized peptide derived from human LWS. at amino acid range: 380-420
Immunogen Region	380-420
Specificity	RXRG polyclonal antibody (Retinoic Acid Receptor Rxr-Gamma) binds to endogenous Retinoic Acid Receptor Rxr-Gamma at the amino acid region 380-420.
Immunogen Sequence	



Western blot analysis of 1, mouse-heart cells using primary antibody diluted at 1:1000 (4°C overnight). Secondary antibody: Goat Anti-rabbit IgG IRDye 800 (diluted at 1:5000, 25°C, 1 hour) cells nucleus extracted by Minute™™ Cytoplasmic and Nuclear Fractionation kit (SC-003, Inventibiotech, MN, USA).