

Anti-KCTD7 antibody (181-230) (STJ98856)

STJ98856

GENERAL INFORMATION

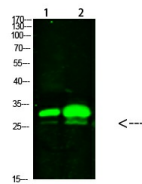
Product Type	Primary antibodies
Short Description	Rabbit polyclonal antibody anti-Btb/Poz Domain-Containing Protein Kctd7 (181-230) is suitable for use in Western Blot and ELISA research applications.
Applications	WB, ELISA
Host/Source	Rabbit
Reactivity	Human, Mouse, Rat

PRODUCT PROPERTIES

Clonality	Polyclonal
Clone ID	
Concentration	1 mg/mL
Conjugation	Unconjugated
Purification	The antibody was affinity-purified from rabbit anti-serum by affinity-chromatography.
Dilution Range	WB 1:500-2000 ELISA 1:10000-20000
Formulation	PBS, 50% Glycerol, 0.5% BSA and 0.02% Sodium Azide.
Isotype	IgG
Storage Instruction	Store at -20°C for up to 1 year from the date of receipt, and avoid repeat freeze-thaw cycles.

TARGET INFORMATION

Gene ID	154881
Gene Symbol	KCTD7
Uniprot ID	KCTD7_HUMAN
Immunogen	Synthesized peptide derived from human KCTD7. at amino acid range: 181-230
Immunogen Region	181-230
Specificity	KCTD7 polyclonal antibody (Btb/Poz Domain-Containing Protein Kctd7) binds to endogenous Btb/Poz Domain-Containing Protein Kctd7 at the amino acid region 181-230.
Immunogen Sequence	



Western blot analysis of 1, mouse-brain 2, mouse-spleen cells using primary antibody diluted at 1:1000 (4°C overnight). Secondary antibody: Goat Anti-rabbit IgG IRDye 800 (diluted at 1:5000, 25°C, 1 hour)

This product is suitable for in-vitro studies under the RESEARCH USE ONLY [RUO] licence. This product must not be used as for diagnostic or other medical purposes.
St John's Laboratory Ltd, Knowledge Dock Business Centre, University Way, London, E16 2RD | Tel: 0208 223 3081