

## Anti-Tri-Methyl-Histone H3-K5 antibody (170-200) (STJ98848)

STJ98848

### GENERAL INFORMATION

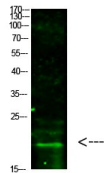
<b>Product Type</b>	Primary antibodies
<b>Short Description</b>	Rabbit polyclonal antibody anti-Tri-Methyl-Histone H3.1 and Histone H3.2 and Histone H3.3 and Histone H3.3C-K5 (170-200) is suitable for use in Western Blot and ELISA research applications.
<b>Applications</b>	WB, ELISA
<b>Host/Source</b>	Rabbit
<b>Reactivity</b>	Human, Mouse, Rat

### PRODUCT PROPERTIES

<b>Clonality</b>	Polyclonal
<b>Clone ID</b>	
<b>Concentration</b>	1 mg/mL
<b>Conjugation</b>	Unconjugated
<b>Purification</b>	The antibody was affinity-purified from rabbit anti-serum by affinity-chromatography.
<b>Dilution</b>	WB 1:500-1:2000
<b>Range</b>	ELISA 1:20000
<b>Formulation</b>	PBS, 50% Glycerol, 0.5% BSA and 0.02% Sodium Azide.
<b>Isotype</b>	IgG
<b>Storage</b>	Store at -20°C for up to 1 year from the date of receipt, and avoid repeat freeze-thaw cycles.
<b>Instruction</b>	

### TARGET INFORMATION

<b>Gene ID</b>	440093 <a href="#">8350/8351/8352/8353/8354/8355/8356/8357/8358/8968</a>
<b>Gene Symbol</b>	H3-5 <a href="#">H3C1.H3C2.H3C3.H3C4.H3C6.H3</a>
<b>Uniprot ID</b>	<a href="#">H3C_HUMAN</a> <a href="#">H31_HUMAN</a> <a href="#">H33_HUMAN</a>
<b>Immunogen</b>	Synthesized Tri-Methyl peptide derived from human Histone H3. at amino acid range: K5
<b>Immunogen Region</b>	170-200
<b>Specificity</b>	Tri-Methyl-Histone H3-K5 polyclonal antibody (Histone H3.1 and Histone H3.2 and Histone H3.3 and Histone H3.3C) binds to endogenous Histone H3.1 and Histone H3.2 and Histone H3.3 and Histone H3.3C at the amino acid region 170-200.
<b>Immunogen Sequence</b>	



Western blot analysis of HeLa cells using primary antibody diluted at 1:1000 (4°C overnight). Secondary antibody: Goat Anti-rabbit IgG IRDye 800 (diluted at 1:5000, 25°C, 1 hour)

This product is suitable for in-vitro studies under the RESEARCH USE ONLY [RUO] licence. This product must not be used as for diagnostic or other medical purposes.  
St John's Laboratory Ltd, Knowledge Dock Business Centre, University Way, London, E16 2RD | Tel: 0208 223 3081