

Anti-Acetyl-ACSS1-K642 antibody (K642) (STJ98836)

STJ98836

GENERAL INFORMATION

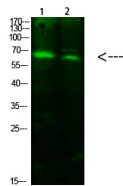
Product Type	Primary antibodies
Short Description	Rabbit polyclonal antibody anti-Acetyl-Acetyl-Coenzyme A Synthetase 2-Like-Mitochondrial-K642 (K642) is suitable for use in Western Blot and ELISA research applications.
Applications	WB, ELISA
Host/Source	Rabbit
Reactivity	Human, Mouse, Rat

PRODUCT PROPERTIES

Clonality	Polyclonal
Clone ID	
Concentration	1 mg/mL
Conjugation	Unconjugated
Purification	The antibody was affinity-purified from rabbit anti-serum by affinity-chromatography.
Dilution	WB 1:500-1:2000
Range	ELISA 1:20000
Formulation	PBS, 50% Glycerol, 0.5% BSA and 0.02% Sodium Azide.
Isotype	IgG
Storage	Store at-20°C for up to 1 year from the date of receipt, and avoid repeat freeze-thaw cycles.
Instruction	

TARGET INFORMATION

Gene ID	84532
Gene Symbol	ACSS1
Uniprot ID	ACS2L_HUMAN
Immunogen	Synthesized Acetyl peptide derived from human ACSS1. at amino acid range: K642
Immunogen Region	K642
Specificity	Acetyl-ACSS1-K642 polyclonal antibody (Acetyl-Coenzyme A Synthetase 2-Like-Mitochondrial) binds to endogenous Acetyl-Coenzyme A Synthetase 2-Like-Mitochondrial at the amino acid region K642.
Immunogen Sequence	



Western blot analysis of 1, 293T 2, hela cells using primary antibody diluted at 1:1000 (4°C overnight). Secondary antibody: Goat Anti-rabbit IgG IRDye 800 (diluted at 1:5000, 25°C, 1 hour)