

## Anti-GLI1 antibody (460-490) (STJ98834)

STJ98834

### GENERAL INFORMATION

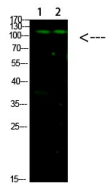
|                          |   |
|--------------------------|---|
| <b>Product Type</b>      | Primary antibodies  |
| <b>Short Description</b> | Rabbit polyclonal antibody anti-Zinc Finger Protein Gli1 (460-490) is suitable for use in Western Blot and ELISA research applications. |
| <b>Applications</b>      | WB, ELISA   |
| <b>Host/Source</b>       | Rabbit  |
| <b>Reactivity</b>        | Human, Mouse  |

### PRODUCT PROPERTIES

|                            |  |
|----------------------------|--|
| <b>Clonality</b>           | Polyclonal   |
| <b>Clone ID</b>            |  |
| <b>Concentration</b>       | 1 mg/mL  |
| <b>Conjugation</b>         | Unconjugated   |
| <b>Purification</b>        | The antibody was affinity-purified from rabbit anti-serum by affinity-chromatography.          |
| <b>Dilution Range</b>      | WB 1:500-2000<br>ELISA 1:10000-20000   |
| <b>Formulation</b>         | PBS, 50% Glycerol, 0.5% BSA and 0.02% Sodium Azide.  |
| <b>Isotype</b>             | IgG  |
| <b>Storage Instruction</b> | Store at -20°C for up to 1 year from the date of receipt, and avoid repeat freeze-thaw cycles. |

### TARGET INFORMATION

|                           |  |
|---------------------------|--|
| <b>Gene ID</b>            | 2735   |
| <b>Gene Symbol</b>        | GLI1   |
| <b>Uniprot ID</b>         | GLI1_HUMAN   |
| <b>Immunogen</b>          | Synthesized peptide derived from human GLI-1. at amino acid range: 460-490   |
| <b>Immunogen Region</b>   | 460-490  |
| <b>Specificity</b>        | GLI1 polyclonal antibody (Zinc Finger Protein Gli1) binds to endogenous Zinc Finger Protein Gli1 at the amino acid region 460-490. |
| <b>Immunogen Sequence</b> |  |



Western blot analysis of 1, mouse-liver 2, hela cells using primary antibody diluted at 1:1000 (4°C overnight). Secondary antibody: Goat Anti-rabbit IgG IRDye 800 (diluted at 1:5000, 25°C, 1 hour)

This product is suitable for in-vitro studies under the RESEARCH USE ONLY [RUO] licence. This product must not be used as for diagnostic or other medical purposes.  
St John's Laboratory Ltd, Knowledge Dock Business Centre, University Way, London, E16 2RD | Tel: 0208 223 3081