

Anti-VSIG2 antibody (260-290) (STJ98833)

STJ98833

GENERAL INFORMATION

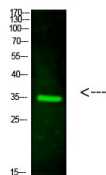
Product Type	Primary antibodies
Short Description	Rabbit polyclonal antibody anti-V-Set And Immunoglobulin Domain-Containing Protein 2 (260-290) is suitable for use in Western Blot and ELISA research applications.
Applications	WB, ELISA
Host/Source	Rabbit
Reactivity	Human, Rat, Mouse

PRODUCT PROPERTIES

Clonality	Polyclonal
Clone ID	
Concentration	1 mg/mL
Conjugation	Unconjugated
Purification	The antibody was affinity-purified from rabbit anti-serum by affinity-chromatography.
Dilution	WB 1:500-2000
Range	ELISA 1:10000-20000
Formulation	PBS, 50% Glycerol, 0.5% BSA and 0.02% Sodium Azide.
Isotype	IgG
Storage	Store at -20°C for up to 1 year from the date of receipt, and avoid repeat freeze-thaw cycles.
Instruction	

TARGET INFORMATION

Gene ID	23584
Gene Symbol	VSIG2
Uniprot ID	VSIG2_HUMAN
Immunogen	Synthesized peptide derived from human CTXL. at amino acid range: 260-290
Immunogen Region	260-290
Specificity	VSIG2 polyclonal antibody (V-Set And Immunoglobulin Domain-Containing Protein 2) binds to endogenous V-Set And Immunoglobulin Domain-Containing Protein 2 at the amino acid region 260-290.
Immunogen Sequence	



Western blot analysis of HeLa cells using primary antibody diluted at 1:1000 (4°C overnight). Secondary antibody: Goat Anti-rabbit IgG IRDye 800 (diluted at 1:5000, 25°C, 1 hour)