

Anti-SREBF1 antibody (250-330) (STJ98832)

STJ98832

GENERAL INFORMATION

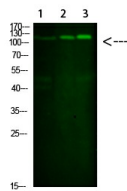
Product Type	Primary antibodies
Short Description	Rabbit polyclonal antibody anti-Sterol Regulatory Element-Binding Protein 1 (250-330) is suitable for use in Western Blot and ELISA research applications.
Applications	WB, ELISA
Host/Source	Rabbit
Reactivity	Human, Mouse, Rat

PRODUCT PROPERTIES

Clonality	Polyclonal
Clone ID	
Concentration	1 mg/mL
Conjugation	Unconjugated
Purification	The antibody was affinity-purified from rabbit anti-serum by affinity-chromatography.
Dilution Range	WB 1:500-2000 ELISA 1:10000-20000
Formulation	PBS, 50% Glycerol, 0.5% BSA and 0.02% Sodium Azide.
Isotype	IgG
Storage	Store at -20°C for up to 1 year from the date of receipt, and avoid repeat freeze-thaw cycles.
Instruction	

TARGET INFORMATION

Gene ID	6720
Gene Symbol	SREBF1
Uniprot ID	SRBP1_HUMAN
Immunogen	Synthesized peptide derived from human SREBP-1. at amino acid range: 250-330
Immunogen Region	250-330
Specificity	SREBF1 polyclonal antibody (Sterol Regulatory Element-Binding Protein 1) binds to endogenous Sterol Regulatory Element-Binding Protein 1 at the amino acid region 250-330.
Immunogen Sequence	



Western blot analysis of 1, mouse-liver 2, hela 3, mouse-brain cells using primary antibody diluted at 1:1000 (4°C overnight). Secondary antibody: Goat Anti-rabbit IgG IRDye 800 (diluted at 1:5000, 25°C, 1 hour)