

Anti-HLA-DQA1 antibody (21-70) (STJ98824)

STJ98824

GENERAL INFORMATION

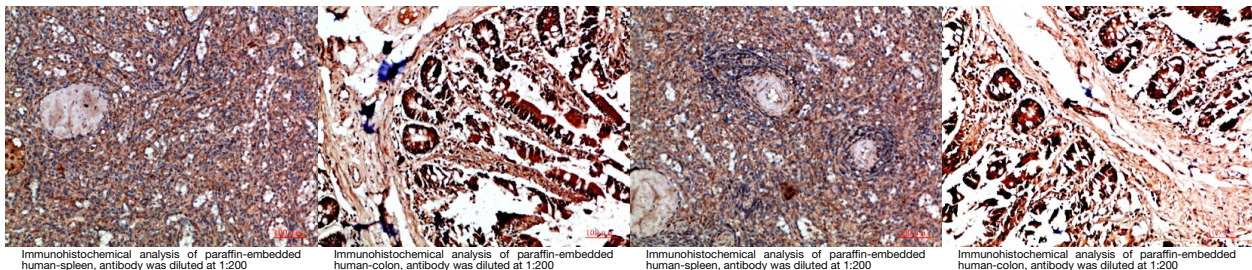
Product Type	Primary antibodies
Short Description	Rabbit polyclonal antibody anti-Hla Class II Histocompatibility antigen-Dq Alpha 1 Chain (21-70) is suitable for use in Immunohistochemistry, Immunofluorescence and ELISA research applications.
Applications	IHC-P, IF-P, ELISA
Host/Source	Rabbit
Reactivity	Human

PRODUCT PROPERTIES

Clonality	Polyclonal
Clone ID	
Concentration	1 mg/mL
Conjugation	Unconjugated
Purification	The antibody was affinity-purified from rabbit anti-serum by affinity-chromatography.
Dilution	IHC-P 1:50-200
Range	ELISA 1:10000-20000
Formulation	PBS, 50% Glycerol, 0.5% BSA and 0.02% Sodium Azide.
Isotype	IgG
Storage	Store at -20°C for up to 1 year from the date of receipt, and avoid repeat freeze-thaw cycles.
Instruction	

TARGET INFORMATION

Gene ID	3117
Gene Symbol	HLA-DQA1
Uniprot ID	DQA1_HUMAN
Immunogen	The antiserum was produced against synthesized peptide derived from the Internal region of human HLA-DQA1 at amino acid range 21-70
Immunogen Region	21-70
Specificity	HLA-DQA1 polyclonal antibody (Hla Class II Histocompatibility Antigen-Dq Alpha 1 Chain) binds to endogenous Hla Class II Histocompatibility Antigen-Dq Alpha 1 Chain at the amino acid region 21-70.
Immunogen Sequence	



This product is suitable for in-vitro studies under the RESEARCH USE ONLY [RUO] licence. This product must not be used as for diagnostic or other medical purposes.
St John's Laboratory Ltd, Knowledge Dock Business Centre, University Way, London, E16 2RD | Tel: 0208 223 3081