

Anti-ADI1 antibody (71-120) (STJ98823)

STJ98823

GENERAL INFORMATION

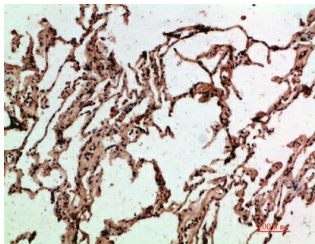
Product Type	Primary antibodies
Short Description	Rabbit polyclonal antibody anti-1-2-Dihydroxy-3-Keto-5-Methylthiopentene Dioxygenase (71-120) is suitable for use in Immunohistochemistry, Immunofluorescence and ELISA research applications.
Applications	IHC-P, IF-P, ELISA
Host/Source	Rabbit
Reactivity	Human, Mouse, Rat

PRODUCT PROPERTIES

Clonality	Polyclonal
Clone ID	
Concentration	1 mg/mL
Conjugation	Unconjugated
Purification	The antibody was affinity-purified from rabbit anti-serum by affinity-chromatography.
Dilution	IHC-P 1:50-200
Range	ELISA 1:10000-20000
Formulation	PBS, 50% Glycerol, 0.5% BSA and 0.02% Sodium Azide.
Isotype	IgG
Storage	Store at -20°C for up to 1 year from the date of receipt, and avoid repeat freeze-thaw cycles.
Instruction	

TARGET INFORMATION

Gene ID	55256
Gene Symbol	ADI1
Uniprot ID	MTND_HUMAN
Immunogen	The antiserum was produced against synthesized peptide derived from the Internal region of human ADI1 at amino acid range 71-120
Immunogen Region	71-120
Specificity	ADI1 polyclonal antibody (1-2-Dihydroxy-3-Keto-5-Methylthiopentene Dioxygenase) binds to endogenous 1-2-Dihydroxy-3-Keto-5-Methylthiopentene Dioxygenase at the amino acid region 71-120.
Immunogen Sequence	



Immunohistochemical analysis of paraffin-embedded human lung, antibody was diluted at 1:200

This product is suitable for in-vitro studies under the RESEARCH USE ONLY [RUO] licence. This product must not be used as for diagnostic or other medical purposes.
St John's Laboratory Ltd, Knowledge Dock Business Centre, University Way, London, E16 2RD | Tel: 0208 223 3081