

Anti-AVPR1B antibody (271-320) (STJ98822)

STJ98822

GENERAL INFORMATION

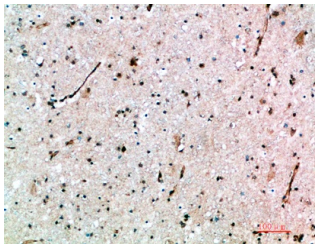
| | |
|--------------------------|---|
| Product Type | Primary antibodies |
| Short Description | Rabbit polyclonal antibody anti-Vasopressin V1b Receptor (271-320) is suitable for use in Immunohistochemistry, Immunofluorescence and ELISA research applications. |
| Applications | IHC-P, IF-P, ELISA |
| Host/Source | Rabbit |
| Reactivity | Human, Mouse, Rat |

PRODUCT PROPERTIES

| | |
|----------------------------|--|
| Clonality | Polyclonal |
| Clone ID | |
| Concentration | 1 mg/mL |
| Conjugation | Unconjugated |
| Purification | The antibody was affinity-purified from rabbit anti-serum by affinity-chromatography. |
| Dilution Range | IHC-P 1:50-200 ELISA 1:10000-20000 |
| Formulation | PBS, 50% Glycerol, 0.5% BSA and 0.02% Sodium Azide. |
| Isotype | IgG |
| Storage Instruction | Store at -20°C for up to 1 year from the date of receipt, and avoid repeat freeze-thaw cycles. |

TARGET INFORMATION

| | |
|---------------------------|--|
| Gene ID | 553 |
| Gene Symbol | AVPR1B |
| Uniprot ID | V1BR_HUMAN |
| Immunogen | The antiserum was produced against synthesized peptide derived from the Internal region of human AVPR1B at amino acid range 271-320 |
| Immunogen Region | 271-320 |
| Specificity | AVPR1B polyclonal antibody (Vasopressin V1b Receptor) binds to endogenous Vasopressin V1b Receptor at the amino acid region 271-320. |
| Immunogen Sequence | |



Immunohistochemical analysis of paraffin-embedded human brain, antibody was diluted at 1:200