

Anti-VHL antibody (1-50) (STJ98809)

STJ98809

GENERAL INFORMATION

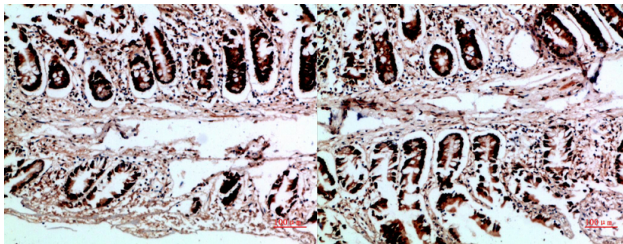
Product Type	Primary antibodies
Short Description	Rabbit polyclonal antibody anti-Von Hippel-Lindau Disease Tumor Suppressor (1-50) is suitable for use in Immunohistochemistry, Immunofluorescence and ELISA research applications.
Applications	IHC-P, IF-P, ELISA
Host/Source	Rabbit
Reactivity	Human, Rat, Mouse

PRODUCT PROPERTIES

Clonality	Polyclonal
Clone ID	
Concentration	1 mg/mL
Conjugation	Unconjugated
Purification	The antibody was affinity-purified from rabbit anti-serum by affinity-chromatography.
Dilution Range	IHC-P 1:50-200 ELISA 1:10000-20000
Formulation	PBS, 50% Glycerol, 0.5% BSA and 0.02% Sodium Azide.
Isotype	IgG
Storage	Store at -20°C for up to 1 year from the date of receipt, and avoid repeat freeze-thaw cycles.
Instruction	

TARGET INFORMATION

Gene ID	7428
Gene Symbol	VHL
Uniprot ID	VHL_HUMAN
Immunogen	The antiserum was produced against synthesized peptide derived from the N-terminal region of human VHL at amino acid range 1-50
Immunogen Region	1-50
Specificity	VHL polyclonal antibody (Von Hippel-Lindau Disease Tumor Suppressor) binds to endogenous Von Hippel-Lindau Disease Tumor Suppressor at the amino acid region 1-50.
Immunogen Sequence	



Immunohistochemical analysis of paraffin-embedded human-colon, antibody was diluted at 1:200

Immunohistochemical analysis of paraffin-embedded human-colon, antibody was diluted at 1:200

This product is suitable for in-vitro studies under the RESEARCH USE ONLY [RUO] licence. This product must not be used as for diagnostic or other medical purposes.
St John's Laboratory Ltd, Knowledge Dock Business Centre, University Way, London, E16 2RD | Tel: 0208 223 3081