

Anti-DLEU7 antibody (51-100) (STJ98807)

STJ98807

GENERAL INFORMATION

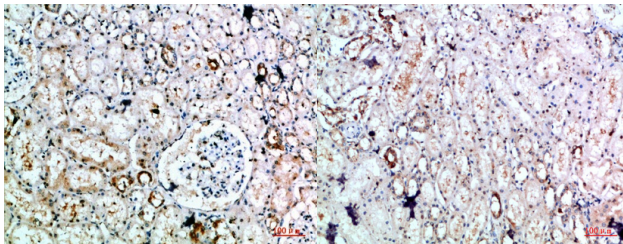
Product Type	Primary antibodies
Short Description	Rabbit polyclonal antibody anti-Leukemia-Associated Protein 7 (51-100) is suitable for use in Immunohistochemistry, Immunofluorescence and ELISA research applications.
Applications	IHC-P, IF-P, ELISA
Host/Source	Rabbit
Reactivity	Human, Rat, Mouse

PRODUCT PROPERTIES

Clonality	Polyclonal
Clone ID	
Concentration	1 mg/mL
Conjugation	Unconjugated
Purification	The antibody was affinity-purified from rabbit anti-serum by affinity-chromatography.
Dilution Range	IHC-P 1:50-200 ELISA 1:10000-20000
Formulation	PBS, 50% Glycerol, 0.5% BSA and 0.02% Sodium Azide.
Isotype	IgG
Storage	Store at -20°C for up to 1 year from the date of receipt, and avoid repeat freeze-thaw cycles.
Instruction	

TARGET INFORMATION

Gene ID	220107
Gene Symbol	DLEU7
Uniprot ID	LEU7_HUMAN
Immunogen	The antiserum was produced against synthesized peptide derived from the Internal region of human DLEU7 at amino acid range 51-100
Immunogen Region	51-100
Specificity	DLEU7 polyclonal antibody (Leukemia-Associated Protein 7) binds to endogenous Leukemia-Associated Protein 7 at the amino acid region 51-100.
Immunogen Sequence	



Immunohistochemical analysis of paraffin-embedded human-kidney, antibody was diluted at 1:200

Immunohistochemical analysis of paraffin-embedded human-kidney, antibody was diluted at 1:200

This product is suitable for in-vitro studies under the RESEARCH USE ONLY [RUO] licence. This product must not be used as for diagnostic or other medical purposes.
St John's Laboratory Ltd, Knowledge Dock Business Centre, University Way, London, E16 2RD | Tel: 0208 223 3081