

Anti-IL27 antibody (1-50) (STJ98795)

STJ98795

GENERAL INFORMATION

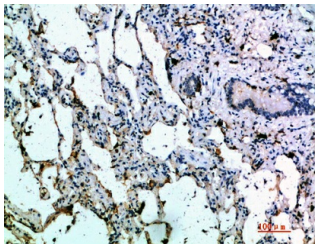
Product Type	Primary antibodies
Short Description	Rabbit polyclonal antibody anti-Interleukin-27 Subunit Alpha (1-50) is suitable for use in Immunohistochemistry, Immunofluorescence and ELISA research applications.
Applications	IHC-P, IF-P, ELISA
Host/Source	Rabbit
Reactivity	Human, Mouse, Rat

PRODUCT PROPERTIES

Clonality	Polyclonal
Clone ID	
Concentration	1 mg/mL
Conjugation	Unconjugated
Purification	The antibody was affinity-purified from rabbit anti-serum by affinity-chromatography.
Dilution Range	IHC-P 1:50-200 ELISA 1:10000-20000
Formulation	PBS, 50% Glycerol, 0.5% BSA and 0.02% Sodium Azide.
Isotype	IgG
Storage Instruction	Store at -20°C for up to 1 year from the date of receipt, and avoid repeat freeze-thaw cycles.

TARGET INFORMATION

Gene ID	246778
Gene Symbol	IL27
Uniprot ID	IL27A_HUMAN
Immunogen	Synthetic peptide from human protein at amino acid range: 1-50
Immunogen Region	1-50
Specificity	IL27 polyclonal antibody (Interleukin-27 Subunit Alpha) binds to endogenous Interleukin-27 Subunit Alpha at the amino acid region 1-50.
Immunogen Sequence	



Immunohistochemical analysis of paraffin-embedded human-lung, antibody was diluted at 1:200