

Anti-TGFB3 antibody (221-270) (STJ98771)

STJ98771

GENERAL INFORMATION

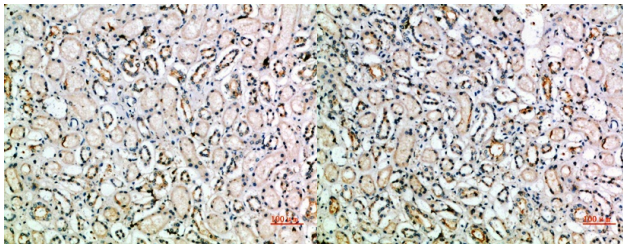
Product Type	Primary antibodies
Short Description	Rabbit polyclonal antibody anti-Transforming Growth Factor Beta-3 Proprotein Cleaved Into-Latency-Associated Peptide (221-270) is suitable for use in Immunohistochemistry, Immunofluorescence and ELISA research applications.
Applications	IHC-P, IF-P, ELISA
Host/Source	Rabbit
Reactivity	Human, Mouse, Rat

PRODUCT PROPERTIES

Clonality	Polyclonal
Clone ID	
Concentration	1 mg/mL
Conjugation	Unconjugated
Purification	The antibody was affinity-purified from rabbit anti-serum by affinity-chromatography.
Dilution	IHC-P 1:50-200
Range	ELISA 1:10000-20000
Formulation	PBS, 50% Glycerol, 0.5% BSA and 0.02% Sodium Azide.
Isotype	IgG
Storage	Store at -20°C for up to 1 year from the date of receipt, and avoid repeat freeze-thaw cycles.
Instruction	

TARGET INFORMATION

Gene ID	7043
Gene Symbol	TGFB3
Uniprot ID	TGFB3_HUMAN
Immunogen	Synthetic peptide from human protein at amino acid range: 221-270
Immunogen Region	221-270
Specificity	TGFB3 polyclonal antibody (Transforming Growth Factor Beta-3 Proprotein Cleaved Into-Latency-Associated Peptide) binds to endogenous Transforming Growth Factor Beta-3 Proprotein Cleaved Into-Latency-Associated Peptide at the amino acid region 221-270
Immunogen Sequence	



Immunohistochemical analysis of paraffin-embedded human-kidney, antibody was diluted at 1:200

Immunohistochemical analysis of paraffin-embedded human-kidney, antibody was diluted at 1:200

This product is suitable for in-vitro studies under the RESEARCH USE ONLY [RUO] licence. This product must not be used as for diagnostic or other medical purposes.
 St John's Laboratory Ltd, Knowledge Dock Business Centre, University Way, London, E16 2RD | Tel: 0208 223 3081