

Anti-TGFB2 antibody (61-110) (STJ98769)

STJ98769

GENERAL INFORMATION

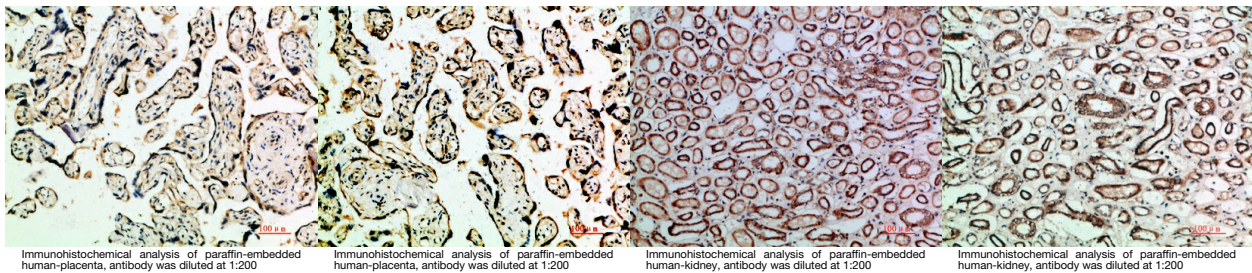
| | |
|--------------------------|--|
| Product Type | Primary antibodies |
| Short Description | Rabbit polyclonal antibody anti-Transforming Growth Factor Beta-2 Proprotein (61-110) is suitable for use in Western Blot, Immunohistochemistry, Immunofluorescence and ELISA research applications. |
| Applications | WB, IHC-P, IF-P, ELISA |
| Host/Source | Rabbit |
| Reactivity | Human, Mouse, Rat |

PRODUCT PROPERTIES

| | |
|----------------------------|--|
| Clonality | Polyclonal |
| Clone ID | |
| Concentration | 1 mg/mL |
| Conjugation | Unconjugated |
| Purification | The antibody was affinity-purified from rabbit anti-serum by affinity-chromatography. |
| Dilution Range | WB 1:500-2000 IHC-P 1:500-200 ELISA 1:10000-20000 |
| Formulation | PBS, 50% Glycerol, 0.5% BSA and 0.02% Sodium Azide. |
| Isotype | IgG |
| Storage Instruction | Store at -20°C for up to 1 year from the date of receipt, and avoid repeat freeze-thaw cycles. |

TARGET INFORMATION

| | |
|---------------------------|--|
| Gene ID | 7042 |
| Gene Symbol | TGFB2 |
| Uniprot ID | TGFB2_HUMAN |
| Immunogen | Synthetic peptide from human protein at amino acid range: 61-110 |
| Immunogen Region | 61-110 |
| Specificity | TGFB2 polyclonal antibody (Transforming Growth Factor Beta-2 Proprotein) binds to endogenous Transforming Growth Factor Beta-2 Proprotein at the amino acid region 61-110. |
| Immunogen Sequence | |



This product is suitable for in-vitro studies under the RESEARCH USE ONLY [RUO] licence. This product must not be used as for diagnostic or other medical purposes.
 St John's Laboratory Ltd, Knowledge Dock Business Centre, University Way, London, E16 2RD | Tel: 0208 223 3081