

Anti-CLEC4M antibody (271-320) (STJ98766)

STJ98766

GENERAL INFORMATION

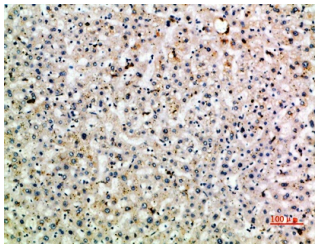
Product Type	Primary antibodies
Short Description	Rabbit polyclonal antibody anti-C-Type Lectin Domain Family 4 Member M (271-320) is suitable for use in Western Blot, Immunohistochemistry, Immunofluorescence and ELISA research applications.
Applications	WB, IHC-P, IF-P, ELISA
Host/Source	Rabbit
Reactivity	Human, Mouse, Rat

PRODUCT PROPERTIES

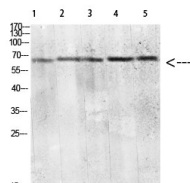
Clonality	Polyclonal
Clone ID	
Concentration	1 mg/mL
Conjugation	Unconjugated
Purification	The antibody was affinity-purified from rabbit anti-serum by affinity-chromatography.
Dilution Range	WB 1:500-2000 IHC-P 1:500-200 ELISA 1:10000-20000
Formulation	PBS, 50% Glycerol, 0.5% BSA and 0.02% Sodium Azide.
Isotype	IgG
Storage Instruction	Store at -20°C for up to 1 year from the date of receipt, and avoid repeat freeze-thaw cycles.

TARGET INFORMATION

Gene ID	10332
Gene Symbol	CLEC4M
Uniprot ID	CLC4M_HUMAN
Immunogen	Synthetic peptide from human protein at amino acid range: 271-320
Immunogen Region	271-320
Specificity	CLEC4M polyclonal antibody (C-Type Lectin Domain Family 4 Member M) binds to endogenous C-Type Lectin Domain Family 4 Member M at the amino acid region 271-320.
Immunogen Sequence	



Immunohistochemical analysis of paraffin-embedded human-liver, antibody was diluted at 1:200



1, mouse-lung 2, mouse-lung lysate
3, 293T 4, Hela 5, 3T3

Western blot analysis of mouse-lung mouse-lung lysate, antibody was diluted at 2000. Secondary antibody was diluted at 1:20000