

## Anti-BTN3A1/2/3 antibody (41-90) (STJ98764)

STJ98764

### GENERAL INFORMATION

<b>Product Type</b>	Primary antibodies
<b>Short Description</b>	Rabbit polyclonal antibody anti-Butyrophilin subfamily 3 member A1 and Butyrophilin subfamily 3 member A2 and Butyrophilin subfamily 3 member A3 (41-90) is suitable for use in Immunohistochemistry, Immunofluorescence and ELISA research applications.
<b>Applications</b>	IHC-P, IF-P, ELISA
<b>Host/Source</b>	Rabbit
<b>Reactivity</b>	Human, Rat, Mouse

### PRODUCT PROPERTIES

<b>Clonality</b>	Polyclonal
<b>Clone ID</b>	
<b>Concentration</b>	1 mg/mL
<b>Conjugation</b>	Unconjugated
<b>Purification</b>	The antibody was affinity-purified from rabbit anti-serum by affinity-chromatography.
<b>Dilution</b>	IHC-P 1:50-200
<b>Range</b>	ELISA 1:10000-20000
<b>Formulation</b>	PBS, 50% Glycerol, 0.5% BSA and 0.02% Sodium Azide.
<b>Isotype</b>	IgG
<b>Storage</b>	Store at -20°C for up to 1 year from the date of receipt, and avoid repeat freeze-thaw cycles.
<b>Instruction</b>	

### TARGET INFORMATION

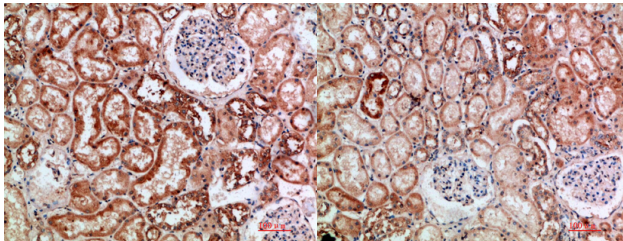
**Gene ID** [11119](#)  
[11118](#)  
[10384](#)  
[BTN3A1](#)  
[BTN3A2](#)  
[BT3A1\\_HUMAN](#)  
[BT3A2\\_HUMAN](#)  
[BT3A3\\_HUMAN](#)

**Immunogen** Synthetic peptide from human protein at amino acid range: 41-90

**Immunogen Region** 41-90

**Specificity** BTN3A1/2/3 polyclonal antibody (Butyrophilin subfamily 3 member A1 and Butyrophilin subfamily 3 member A2 and Butyrophilin subfamily 3 member A3) binds to endogenous Butyrophilin subfamily 3 member A1 and Butyrophilin subfamily 3 member A2 and Butyro

**Immunogen Sequence**



Immunohistochemical analysis of paraffin-embedded human-kidney, antibody was diluted at 1:200

Immunohistochemical analysis of paraffin-embedded human-kidney, antibody was diluted at 1:200

This product is suitable for in-vitro studies under the RESEARCH USE ONLY [RUO] licence. This product must not be used as for diagnostic or other medical purposes.  
 St John's Laboratory Ltd, Knowledge Dock Business Centre, University Way, London, E16 2RD | Tel: 0208 223 3081