

Anti-LAMP3 antibody (261-310) (STJ98762)

STJ98762

GENERAL INFORMATION

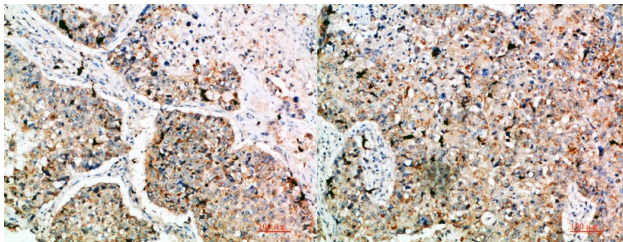
Product Type	Primary antibodies
Short Description	Rabbit polyclonal antibody anti-Lysosome-Associated Membrane Glycoprotein 3 (261-310) is suitable for use in Western Blot, Immunohistochemistry, Immunofluorescence and ELISA research applications.
Applications	WB, IHC-P, IF-P, ELISA
Host/Source	Rabbit
Reactivity	Human, Rat, Mouse

PRODUCT PROPERTIES

Clonality	Polyclonal
Clone ID	
Concentration	1 mg/mL
Conjugation	Unconjugated
Purification	The antibody was affinity-purified from rabbit anti-serum by affinity-chromatography.
Dilution Range	WB 1:500-2000 IHC-P 1:500-200 ELISA 1:10000-20000
Formulation	PBS, 50% Glycerol, 0.5% BSA and 0.02% Sodium Azide.
Isotype	IgG
Storage Instruction	Store at -20°C for up to 1 year from the date of receipt, and avoid repeat freeze-thaw cycles.

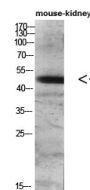
TARGET INFORMATION

Gene ID	27074
Gene Symbol	LAMP3
Uniprot ID	LAMP3_HUMAN
Immunogen	Synthetic peptide from human protein at amino acid range: 261-310
Immunogen Region	261-310
Specificity	LAMP3 polyclonal antibody (Lysosome-Associated Membrane Glycoprotein 3) binds to endogenous Lysosome-Associated Membrane Glycoprotein 3 at the amino acid region 261-310.
Immunogen Sequence	



Immunohistochemical analysis of paraffin-embedded human-lung-cancer, antibody was diluted at 1:200

Immunohistochemical analysis of paraffin-embedded human-lung-cancer, antibody was diluted at 1:200



Western blot analysis of mouse-lung mouse-heart 293T HeLa 3T3 lysate, antibody was diluted at 500. Secondary antibody was diluted at 1:20000

This product is suitable for in-vitro studies under the RESEARCH USE ONLY [RUO] licence. This product must not be used as for diagnostic or other medical purposes.
St John's Laboratory Ltd, Knowledge Dock Business Centre, University Way, London, E16 2RD | Tel: 0208 223 3081