

Anti-CD158f1/2 antibody (121-170) (STJ98751)

STJ98751

GENERAL INFORMATION

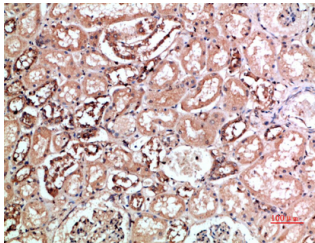
Product Type	Primary antibodies
Short Description	Rabbit polyclonal antibody anti-Killer cell immunoglobulin-like receptor 2DL5A and Killer cell immunoglobulin-like receptor 2DL5B (121-170) is suitable for use in Immunohistochemistry, Immunofluorescence and ELISA research applications.
Applications	IHC-P, IF-P, ELISA
Host/Source	Rabbit
Reactivity	Human, Rat, Mouse

PRODUCT PROPERTIES

Clonality	Polyclonal
Clone ID	
Concentration	1 mg/mL
Conjugation	Unconjugated
Purification	The antibody was affinity-purified from rabbit anti-serum by affinity-chromatography.
Dilution	IHC-P 1:50-200
Range	ELISA 1:10000-20000
Formulation	PBS, 50% Glycerol, 0.5% BSA and 0.02% Sodium Azide.
Isotype	IgG
Storage	Store at -20°C for up to 1 year from the date of receipt, and avoid repeat freeze-thaw cycles.
Instruction	

TARGET INFORMATION

Gene ID	NA
	57292
Gene Symbol	KIR2DL5B
	KIR2DL5A
Uniprot ID	K12LB_HUMAN
	K12LA_HUMAN
Immunogen	Synthetic peptide from human protein at amino acid range: 121-170
Immunogen Region	121-170
Specificity	CD158f1/2 polyclonal antibody (Killer cell immunoglobulin-like receptor 2DL5A and Killer cell immunoglobulin-like receptor 2DL5B) binds to endogenous Killer cell immunoglobulin-like receptor 2DL5A and Killer cell immunoglobulin-like receptor 2DL5B at
Immunogen Sequence	



Immunohistochemical analysis of paraffin-embedded human-kidney, antibody was diluted at 1:200

This product is suitable for in-vitro studies under the RESEARCH USE ONLY [RUO] licence. This product must not be used as for diagnostic or other medical purposes.
St John's Laboratory Ltd, Knowledge Dock Business Centre, University Way, London, E16 2RD | Tel: 0208 223 3081