

## Anti-KIR3DL2 antibody (221-270) (STJ98750)

STJ98750

### GENERAL INFORMATION

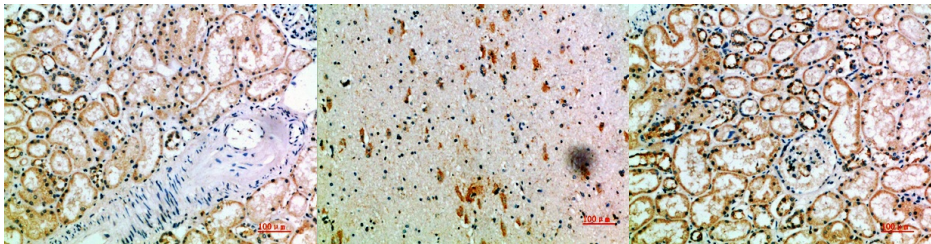
<b>Product Type</b>	Primary antibodies
<b>Short Description</b>	Rabbit polyclonal antibody anti-Killer Cell Immunoglobulin-Like Receptor 3dl2 (221-270) is suitable for use in Immunohistochemistry, Immunofluorescence and ELISA research applications.
<b>Applications</b>	IHC-P, IF-P, ELISA
<b>Host/Source</b>	Rabbit
<b>Reactivity</b>	Human, Rat, Mouse

### PRODUCT PROPERTIES

<b>Clonality</b>	Polyclonal
<b>Clone ID</b>	
<b>Concentration</b>	1 mg/mL
<b>Conjugation</b>	Unconjugated
<b>Purification</b>	The antibody was affinity-purified from rabbit anti-serum by affinity-chromatography.
<b>Dilution Range</b>	IHC-P 1:50-200 ELISA 1:10000-20000
<b>Formulation</b>	PBS, 50% Glycerol, 0.5% BSA and 0.02% Sodium Azide.
<b>Isotype</b>	IgG
<b>Storage</b>	Store at -20°C for up to 1 year from the date of receipt, and avoid repeat freeze-thaw cycles.
<b>Instruction</b>	

### TARGET INFORMATION

<b>Gene ID</b>	<a href="#">3812</a>
<b>Gene Symbol</b>	<a href="#">KIR3DL2</a>
<b>Uniprot ID</b>	<a href="#">KI3L2_HUMAN</a>
<b>Immunogen</b>	Synthetic peptide from human protein at amino acid range: 221-270
<b>Immunogen Region</b>	221-270
<b>Specificity</b>	KIR3DL2 polyclonal antibody (Killer Cell Immunoglobulin-Like Receptor 3dl2) binds to endogenous Killer Cell Immunoglobulin-Like Receptor 3dl2 at the amino acid region 221-270.
<b>Immunogen Sequence</b>	



Immunohistochemical analysis of paraffin-embedded human-kidney, antibody was diluted at 1:200

Immunohistochemical analysis of paraffin-embedded human-brain, antibody was diluted at 1:200

Immunohistochemical analysis of paraffin-embedded human-kidney, antibody was diluted at 1:200

This product is suitable for in-vitro studies under the RESEARCH USE ONLY [RUO] licence. This product must not be used as for diagnostic or other medical purposes.  
 St John's Laboratory Ltd, Knowledge Dock Business Centre, University Way, London, E16 2RD | Tel: 0208 223 3081