

Anti-PDCD1LG2 antibody (31-80) (STJ98748)

STJ98748

GENERAL INFORMATION

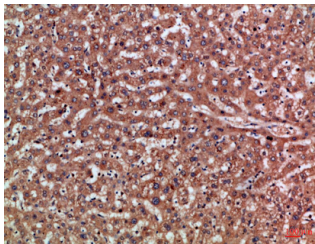
Product Type	Primary antibodies
Short Description	Rabbit polyclonal antibody anti-Programmed Cell Death 1 Ligand 2 (31-80) is suitable for use in Western Blot, Immunohistochemistry, Immunofluorescence and ELISA research applications.
Applications	WB, IHC-P, IF-P, ELISA
Host/Source	Rabbit
Reactivity	Human, Rat, Mouse

PRODUCT PROPERTIES

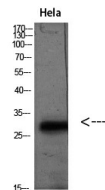
Clonality	Polyclonal
Clone ID	
Concentration	1 mg/mL
Conjugation	Unconjugated
Purification	The antibody was affinity-purified from rabbit anti-serum by affinity-chromatography.
Dilution Range	WB 1:500-2000 IHC-P 1:50-200 ELISA 1:10000-20000
Formulation	PBS, 50% Glycerol, 0.5% BSA and 0.02% Sodium Azide.
Isotype	IgG
Storage Instruction	Store at -20°C for up to 1 year from the date of receipt, and avoid repeat freeze-thaw cycles.

TARGET INFORMATION

Gene ID	80380
Gene Symbol	PDCD1LG2
Uniprot ID	PD1L2_HUMAN
Immunogen	Synthetic peptide from human protein at amino acid range: 31-80
Immunogen Region	31-80
Specificity	PDCD1LG2 polyclonal antibody (Programmed Cell Death 1 Ligand 2) binds to endogenous Programmed Cell Death 1 Ligand 2 at the amino acid region 31-80.
Immunogen Sequence	



Immunohistochemical analysis of paraffin-embedded Human-liver, antibody was diluted at 1:100



Western blot analysis of HeLa (TSA 400nM 24h) lysate, antibody was diluted at 2000. Secondary antibody was diluted at 1:20000

This product is suitable for in-vitro studies under the RESEARCH USE ONLY [RUO] licence. This product must not be used as for diagnostic or other medical purposes.
St John's Laboratory Ltd, Knowledge Dock Business Centre, University Way, London, E16 2RD | Tel: 0208 223 3081