

Anti-CD16 antibody (100-150) (STJ98738)

STJ98738

GENERAL INFORMATION

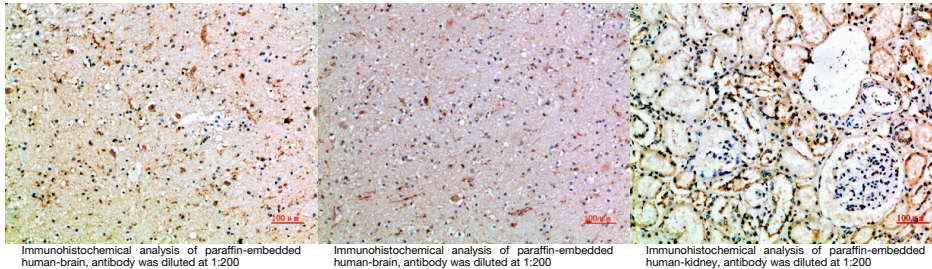
Product Type	Primary antibodies
Short Description	Rabbit polyclonal antibody anti-Low affinity immunoglobulin gamma Fc region receptor III-A and Low affinity immunoglobulin gamma Fc region receptor III-B (100-150) is suitable for use in Immunohistochemistry, Immunofluorescence and ELISA research app
Applications	IHC-P, IF-P, ELISA
Host/Source	Rabbit
Reactivity	Human, Rat, Mouse

PRODUCT PROPERTIES

Clonality	Polyclonal
Clone ID	
Concentration	1 mg/mL
Conjugation	Unconjugated
Purification	The antibody was affinity-purified from rabbit anti-serum by affinity-chromatography.
Dilution	IHC-P 1:50-200
Range	ELISA 1:10000-20000
Formulation	PBS, 50% Glycerol, 0.5% BSA and 0.02% Sodium Azide.
Isotype	IgG
Storage	Store at -20°C for up to 1 year from the date of receipt, and avoid repeat freeze-thaw cycles.
Instruction	

TARGET INFORMATION

Gene ID	2215 2214
Gene Symbol	FCGR3B FCGR3A
Uniprot ID	FCG3B_HUMAN FCG3A_HUMAN
Immunogen	Synthetic peptide from human protein at amino acid range: 100-150
Immunogen Region	100-150
Specificity	CD16 polyclonal antibody (Low affinity immunoglobulin gamma Fc region receptor III-A and Low affinity immunoglobulin gamma Fc region receptor III-B) binds to endogenous Low affinity immunoglobulin gamma Fc region receptor III-A and Low affinity immun
Immunogen Sequence	



This product is suitable for in-vitro studies under the RESEARCH USE ONLY [RUO] licence. This product must not be used as for diagnostic or other medical purposes.
St John's Laboratory Ltd, Knowledge Dock Business Centre, University Way, London, E16 2RD | Tel: 0208 223 3081