

Anti-SOCS3 antibody (20-70) (STJ98729)

STJ98729

GENERAL INFORMATION

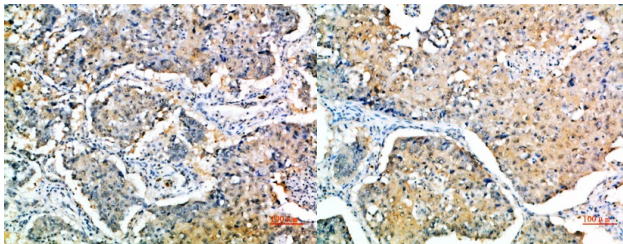
Product Type	Primary antibodies
Short Description	Rabbit polyclonal antibody anti-Suppressor Of Cytokine Signaling 3 (20-70) is suitable for use in Western Blot, Immunohistochemistry and Immunofluorescence research applications.
Applications	WB, IHC-P, IF-P
Host/Source	Rabbit
Reactivity	Human, Mouse, Rat

PRODUCT PROPERTIES

Clonality	Polyclonal
Clone ID	
Concentration	1 mg/mL
Conjugation	Unconjugated
Purification	The antibody was affinity-purified from rabbit anti-serum by affinity-chromatography.
Dilution Range	WB 1:500-1:2000 IHC1:50-300
Formulation	PBS, 50% Glycerol, 0.5% BSA and 0.02% Sodium Azide.
Isotype	IgG
Storage	Store at -20°C for up to 1 year from the date of receipt, and avoid repeat freeze-thaw cycles.
Instruction	

TARGET INFORMATION

Gene ID	9021
Gene Symbol	SOCS3
Uniprot ID	SOCS3_HUMAN
Immunogen	Synthetic peptide from human protein at amino acid range: 20-70
Immunogen Region	20-70
Specificity	SOCS3 polyclonal antibody (Suppressor Of Cytokine Signaling 3) binds to endogenous Suppressor Of Cytokine Signaling 3 at the amino acid region 20-70.
Immunogen Sequence	



Immunohistochemical analysis of paraffin-embedded human-lung-cancer, antibody was diluted at 1:200

Immunohistochemical analysis of paraffin-embedded human-lung-cancer, antibody was diluted at 1:200

This product is suitable for in-vitro studies under the RESEARCH USE ONLY [RUO] licence. This product must not be used as for diagnostic or other medical purposes.
St John's Laboratory Ltd, Knowledge Dock Business Centre, University Way, London, E16 2RD | Tel: 0208 223 3081