

Anti-ASIC1 antibody (220-280) (STJ98706)

STJ98706

GENERAL INFORMATION

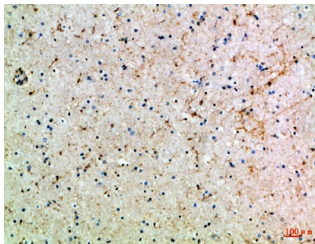
Product Type	Primary antibodies
Short Description	Rabbit polyclonal antibody anti-Acid-Sensing Ion Channel 1 (220-280) is suitable for use in Western Blot, Immunohistochemistry, Immunofluorescence, Immunohistochemistry and ELISA research applications.
Applications	WB, IHC-P, IF-P, IHC-F, ELISA
Host/Source	Rabbit
Reactivity	Human, Mouse, Rat

PRODUCT PROPERTIES

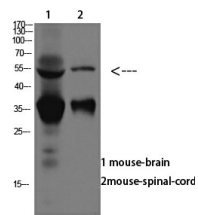
Clonality	Polyclonal
Clone ID	
Concentration	1 mg/mL
Conjugation	Unconjugated
Purification	The antibody was affinity-purified from rabbit anti-serum by affinity-chromatography.
Dilution Range	WB 1:500-2000 IHC-P 1:500-200 ELISA 1:10000-20000
Formulation	PBS, 50% Glycerol, 0.5% BSA and 0.02% Sodium Azide.
Isotype	IgG
Storage Instruction	Store at -20°C for up to 1 year from the date of receipt, and avoid repeat freeze-thaw cycles.

TARGET INFORMATION

Gene ID	41
Gene Symbol	ASIC1
Uniprot ID	ASIC1_HUMAN
Immunogen	Synthetic peptide from human protein at amino acid range: 220-280
Immunogen Region	220-280
Specificity	ASIC1 polyclonal antibody (Acid-Sensing Ion Channel 1) binds to endogenous Acid-Sensing Ion Channel 1 at the amino acid region 220-280.
Immunogen Sequence	



Immunohistochemical analysis of paraffin-embedded Human-brain, antibody was diluted at 1:100



Western blot analysis of mouse-brain, mouse-spinal-cord lysate, antibody was diluted at 1000. Secondary antibody was diluted at 1:20000

This product is suitable for in-vitro studies under the RESEARCH USE ONLY [RUO] licence. This product must not be used as for diagnostic or other medical purposes.
St John's Laboratory Ltd, Knowledge Dock Business Centre, University Way, London, E16 2RD | Tel: 0208 223 3081