

## Anti-ANXA1 antibody (130-180) (STJ98699)

STJ98699

### GENERAL INFORMATION

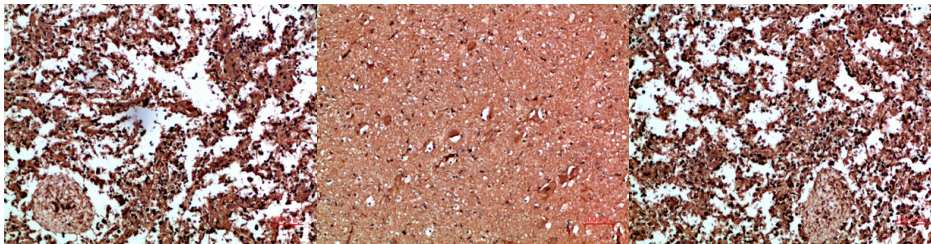
<b>Product Type</b>	Primary antibodies
<b>Short Description</b>	Rabbit polyclonal antibody anti-Annexin A1 (130-180) is suitable for use in Immunofluorescence, Immunocytochemistry, Western Blot, Immunohistochemistry and ELISA research applications.
<b>Applications</b>	IF, ICC, WB, IHC-P, ELISA
<b>Host/Source</b>	Rabbit
<b>Reactivity</b>	Human, Rat, Mouse

### PRODUCT PROPERTIES

<b>Clonality</b>	Polyclonal
<b>Clone ID</b>	
<b>Concentration</b>	1 mg/mL
<b>Conjugation</b>	Unconjugated
<b>Purification</b>	The antibody was affinity-purified from rabbit anti-serum by affinity-chromatography.
<b>Dilution Range</b>	IF 1:50-200 WB 1:500-2000 IHC-P 1:500-200 ELISA 1:10000-20000
<b>Formulation</b>	PBS, 50% Glycerol, 0.5% BSA and 0.02% Sodium Azide.
<b>Isotype</b>	IgG
<b>Storage Instruction</b>	Store at -20°C for up to 1 year from the date of receipt, and avoid repeat freeze-thaw cycles.

### TARGET INFORMATION

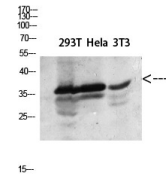
<b>Gene ID</b>	301
<b>Gene Symbol</b>	ANXA1
<b>Uniprot ID</b>	ANXA1_HUMAN
<b>Immunogen</b>	Synthetic peptide from human protein at amino acid range: 130-180
<b>Immunogen Region</b>	130-180
<b>Specificity</b>	ANXA1 polyclonal antibody (Annexin A1) binds to endogenous Annexin A1 at the amino acid region 130-180.
<b>Immunogen Sequence</b>	



Immunohistochemical analysis of paraffin-embedded human-spleen, antibody was diluted at 1:200

Immunohistochemical analysis of paraffin-embedded human-brain, antibody was diluted at 1:200

Immunohistochemical analysis of paraffin-embedded human-spleen, antibody was diluted at 1:200



Western blot analysis of 293T HeLa lysate, antibody was diluted at 2000. Secondary antibody was diluted at 1:20000

This product is suitable for in-vitro studies under the RESEARCH USE ONLY [RUO] licence. This product must not be used as for diagnostic or other medical purposes.  
St John's Laboratory Ltd, Knowledge Dock Business Centre, University Way, London, E16 2RD | Tel: 0208 223 3081