

## Anti-Acetyl-XRCC6-Lys317 antibody (317) (STJ98694)

STJ98694

### GENERAL INFORMATION

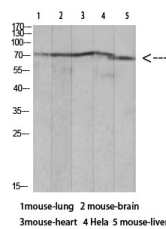
<b>Product Type</b>	Primary antibodies
<b>Short Description</b>	Rabbit polyclonal antibody anti-Acetyl-X-Ray Repair Cross-Complementing Protein 6-Lys317 (317) is suitable for use in Western Blot and ELISA research applications.
<b>Applications</b>	WB, ELISA
<b>Host/Source</b>	Rabbit
<b>Reactivity</b>	Human, Rat, Mouse

### PRODUCT PROPERTIES

<b>Clonality</b>	Polyclonal
<b>Clone ID</b>	
<b>Concentration</b>	1 mg/mL
<b>Conjugation</b>	Unconjugated
<b>Purification</b>	The antibody was affinity-purified from rabbit anti-serum by affinity-chromatography.
<b>Dilution Range</b>	WB 1:500-2000 ELISA 1:10000-20000
<b>Formulation</b>	PBS, 50% Glycerol, 0.5% BSA and 0.02% Sodium Azide.
<b>Isotype</b>	IgG
<b>Storage Instruction</b>	Store at -20°C for up to 1 year from the date of receipt, and avoid repeat freeze-thaw cycles.

### TARGET INFORMATION

<b>Gene ID</b>	<a href="#">2547</a>
<b>Gene Symbol</b>	<a href="#">XRCC6</a>
<b>Uniprot ID</b>	<a href="#">XRCC6_HUMAN</a>
<b>Immunogen</b>	Synthetic Acetyl peptide from human protein at amino acid range: 317
<b>Immunogen Region</b>	317
<b>Specificity</b>	Acetyl-XRCC6-Lys317 polyclonal antibody (X-Ray Repair Cross-Complementing Protein 6) binds to endogenous X-Ray Repair Cross-Complementing Protein 6 at the amino acid region 317.
<b>Immunogen Sequence</b>	



Western blot analysis of mouse-lung lysate, antibody was diluted at 1000. Secondary antibody was diluted at 1:20000