

Anti-Acetyl-Histone H2B-Lys24/25 antibody (24/25) (STJ98689)

STJ98689

GENERAL INFORMATION

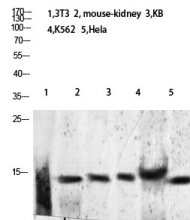
Product Type	Primary antibodies
Short Description	Rabbit polyclonal antibody anti-Acetyl-Histone H2B type 1-A and Histone H2B type 1-B and Histone H2B type 1-C/E/F/G/I-Lys24/25 (24/25) is suitable for use in Western Blot and ELISA research applications.
Applications	WB, ELISA
Host/Source	Rabbit
Reactivity	Human, Rat, Mouse

PRODUCT PROPERTIES

Clonality	Polyclonal
Clone ID	
Concentration	1 mg/mL
Conjugation	Unconjugated
Purification	The antibody was affinity-purified from rabbit anti-serum by affinity-chromatography.
Dilution	WB 1:500-2000
Range	ELISA 1:10000-20000
Formulation	PBS, 50% Glycerol, 0.5% BSA and 0.02% Sodium Azide.
Isotype	IgG
Storage	Store at -20°C for up to 1 year from the date of receipt, and avoid repeat freeze-thaw cycles.
Instruction	

TARGET INFORMATION

Gene ID	3018
	255626
Gene Symbol	H2BC3
	H2BC1
	H2B1B_HUMAN
	H2B1A_HUMAN
	H2B1C_HUMAN
Immunogen	Synthetic Acetyl peptide from human protein at amino acid range: 24/25
Immunogen Region	24/25
Specificity	Acetyl-Histone H2B-Lys24/25 polyclonal antibody (Histone H2B type 1-A and Histone H2B type 1-B and Histone H2B type 1-C/E/F/G/I) binds to endogenous Histone H2B type 1-A and Histone H2B type 1-B and Histone H2B type 1-C/E/F/G/I at the amino acid regi
Immunogen Sequence	



Western blot analysis of K562 mouse-lung lysate, antibody was diluted at 2000. Secondary antibody was diluted at 1:20000

This product is suitable for in-vitro studies under the RESEARCH USE ONLY [RUO] licence. This product must not be used as for diagnostic or other medical purposes.
St John's Laboratory Ltd, Knowledge Dock Business Centre, University Way, London, E16 2RD | Tel: 0208 223 3081