

Anti-PRC1 antibody (460-520) (STJ98681)

STJ98681

GENERAL INFORMATION

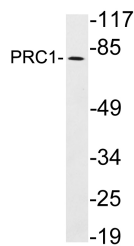
Product Type	Primary antibodies
Short Description	Rabbit polyclonal antibody anti-Protein Regulator Of Cytokinesis 1 (460-520) is suitable for use in Western Blot and ELISA research applications.
Applications	WB, ELISA
Host/Source	Rabbit
Reactivity	Human, Rat, Mouse

PRODUCT PROPERTIES

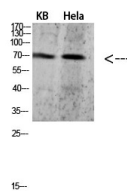
Clonality	Polyclonal
Clone ID	
Concentration	1 mg/mL
Conjugation	Unconjugated
Purification	The antibody was affinity-purified from rabbit anti-serum by affinity-chromatography.
Dilution Range	WB 1:500-2000 ELISA 1:10000-20000
Formulation	PBS, 50% Glycerol, 0.5% BSA and 0.02% Sodium Azide.
Isotype	IgG
Storage	Store at -20°C for up to 1 year from the date of receipt, and avoid repeat freeze-thaw cycles.
Instruction	

TARGET INFORMATION

Gene ID	9055
Gene Symbol	PRC1
Uniprot ID	PRC1_HUMAN
Immunogen	Synthetic peptide from human protein at amino acid range: 460-520
Immunogen Region	460-520
Specificity	PRC1 polyclonal antibody (Protein Regulator Of Cytokinesis 1) binds to endogenous Protein Regulator Of Cytokinesis 1 at the amino acid region 460-520.
Immunogen Sequence	



Western blot analysis of lysates from HeLa cells, using PRC1 antibody.



Western blot analysis of 293T HeLa 3T3 lysate, antibody was diluted at 500. Secondary antibody was diluted at 1:20000