

## Anti-Phospho-ATP1A1-Tyr260 antibody (230-290) (STJ98679)

STJ98679

### GENERAL INFORMATION

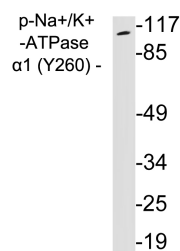
<b>Product Type</b>	Primary antibodies
<b>Short Description</b>	Rabbit polyclonal antibody anti-Phospho-Sodium/Potassium-Transporting Atpase Subunit Alpha-1-Tyr260 (230-290) is suitable for use in Western Blot and ELISA research applications.
<b>Applications</b>	WB, ELISA
<b>Host/Source</b>	Rabbit
<b>Reactivity</b>	Human, Rat, Mouse

### PRODUCT PROPERTIES

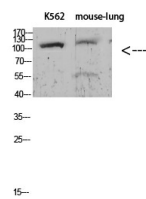
<b>Clonality</b>	Polyclonal
<b>Clone ID</b>	
<b>Concentration</b>	1 mg/mL
<b>Conjugation</b>	Unconjugated
<b>Purification</b>	The antibody was affinity-purified from rabbit anti-serum by affinity-chromatography.
<b>Dilution</b>	WB 1:500-2000
<b>Range</b>	ELISA 1:10000-20000
<b>Formulation</b>	PBS, 50% Glycerol, 0.5% BSA and 0.02% Sodium Azide.
<b>Isotype</b>	IgG
<b>Storage</b>	Store at 20°C for up to 1 year from the date of receipt, and avoid repeat freeze-thaw cycles.
<b>Instruction</b>	

### TARGET INFORMATION

<b>Gene ID</b>	476
<b>Gene Symbol</b>	ATP1A1
<b>Uniprot ID</b>	AT1A1_HUMAN
<b>Immunogen</b>	Synthetic peptide from human protein at amino acid range: 230-290
<b>Immunogen Region</b>	230-290
<b>Specificity</b>	Phospho-ATP1A1-Tyr260 polyclonal antibody (Sodium/Potassium-Transporting Atpase Subunit Alpha-1) binds to endogenous Sodium/Potassium-Transporting Atpase Subunit Alpha-1 at the amino acid region 230-290 only when phosphorylated at Tyr260.
<b>Immunogen Sequence</b>	



Western blot analysis of lysates from 293 cells treated with PMA, using phospho-Na<sup>+</sup>/K<sup>+</sup>-ATPase Alpha 1 (Phospho-Tyr260) antibody.



Western blot analysis of KB Hela lysate, antibody was diluted at 1000. Secondary antibody was diluted at 1:20000