

Anti-DAAM1 antibody (400-500) (STJ98677)

STJ98677

GENERAL INFORMATION

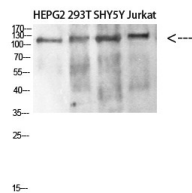
Product Type	Primary antibodies
Short Description	Rabbit polyclonal antibody anti-Disheveled-Associated Activator Of Morphogenesis 1 (400-500) is suitable for use in Western Blot and ELISA research applications.
Applications	WB, ELISA
Host/Source	Rabbit
Reactivity	Human, Mouse

PRODUCT PROPERTIES

Clonality	Polyclonal
Clone ID	
Concentration	1 mg/mL
Conjugation	Unconjugated
Purification	The antibody was affinity-purified from rabbit anti-serum by affinity-chromatography.
Dilution Range	WB 1:500-2000 ELISA 1:10000-20000
Formulation	PBS, 50% Glycerol, 0.5% BSA and 0.02% Sodium Azide.
Isotype	IgG
Storage Instruction	Store at -20°C for up to 1 year from the date of receipt, and avoid repeat freeze-thaw cycles.

TARGET INFORMATION

Gene ID	23002
Gene Symbol	DAAM1
Uniprot ID	DAAM1_HUMAN
Immunogen	Synthetic peptide from human protein at amino acid range: 400-500
Immunogen Region	400-500
Specificity	DAAM1 polyclonal antibody (Disheveled-Associated Activator Of Morphogenesis 1) binds to endogenous Disheveled-Associated Activator Of Morphogenesis 1 at the amino acid region 400-500.
Immunogen Sequence	



Western blot analysis of SW480 MCF7 lysate, antibody was diluted at 500. Secondary antibody was diluted at 1:20000