

Anti-PPP1R15A antibody (430-490) (STJ98676)

STJ98676

GENERAL INFORMATION

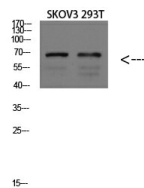
Product Type	Primary antibodies
Short Description	Rabbit polyclonal antibody anti-Protein Phosphatase 1 Regulatory Subunit 15a (430-490) is suitable for use in Western Blot and ELISA research applications.
Applications	WB, ELISA
Host/Source	Rabbit
Reactivity	Human, Rat, Mouse

PRODUCT PROPERTIES

Clonality	Polyclonal
Clone ID	
Concentration	1 mg/mL
Conjugation	Unconjugated
Purification	The antibody was affinity-purified from rabbit anti-serum by affinity-chromatography.
Dilution Range	WB 1:500-2000 ELISA 1:10000-20000
Formulation	PBS, 50% Glycerol, 0.5% BSA and 0.02% Sodium Azide.
Isotype	IgG
Storage	Store at -20°C for up to 1 year from the date of receipt, and avoid repeat freeze-thaw cycles.
Instruction	

TARGET INFORMATION

Gene ID	23645
Gene Symbol	PPP1R15A
Uniprot ID	PR15A_HUMAN
Immunogen	Synthetic peptide from human protein at amino acid range: 430-490
Immunogen Region	430-490
Specificity	PPP1R15A polyclonal antibody (Protein Phosphatase 1 Regulatory Subunit 15a) binds to endogenous Protein Phosphatase 1 Regulatory Subunit 15a at the amino acid region 430-490.
Immunogen Sequence	



Western blot analysis of mouse brain lysate, antibody was diluted at 1000. Secondary antibody was diluted at 1:20000