

Anti-IL16 antibody (900-960) (STJ98673)

STJ98673

GENERAL INFORMATION

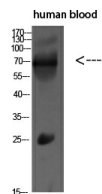
Product Type	Primary antibodies
Short Description	Rabbit polyclonal antibody anti-Pro-Interleukin-16 Cleaved Into-Interleukin-16 (900-960) is suitable for use in Western Blot and ELISA research applications.
Applications	WB, ELISA
Host/Source	Rabbit
Reactivity	Human, Rat, Mouse

PRODUCT PROPERTIES

Clonality	Polyclonal
Clone ID	
Concentration	1 mg/mL
Conjugation	Unconjugated
Purification	The antibody was affinity-purified from rabbit anti-serum by affinity-chromatography.
Dilution Range	WB 1:500-2000 ELISA 1:10000-20000
Formulation	PBS, 50% Glycerol, 0.5% BSA and 0.02% Sodium Azide.
Isotype	IgG
Storage	Store at -20°C for up to 1 year from the date of receipt, and avoid repeat freeze-thaw cycles.
Instruction	

TARGET INFORMATION

Gene ID	3603
Gene Symbol	IL16
Uniprot ID	IL16_HUMAN
Immunogen	Synthetic peptide from human protein at amino acid range: 900-960
Immunogen Region	900-960
Specificity	IL16 polyclonal antibody (Pro-Interleukin-16 Cleaved Into-Interleukin-16) binds to endogenous Pro-Interleukin-16 Cleaved Into-Interleukin-16 at the amino acid region 900-960.
Immunogen Sequence	



Western blot analysis of MCF7 SW480 MOUSE-LIVER mouse-lung MOUSE-KIDNEY lysate. antibody was diluted at 500. Secondary antibody was diluted at 1:20000

This product is suitable for in-vitro studies under the RESEARCH USE ONLY [RUO] licence. This product must not be used as for diagnostic or other medical purposes.
St John's Laboratory Ltd, Knowledge Dock Business Centre, University Way, London, E16 2RD | Tel: 0208 223 3081