

Anti-RPS6KA2 antibody (330-400) (STJ98670)

STJ98670

GENERAL INFORMATION

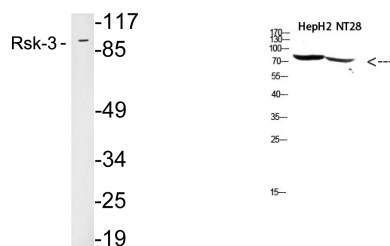
Product Type	Primary antibodies
Short Description	Rabbit polyclonal antibody anti-Ribosomal Protein S6 Kinase Alpha-2 (330-400) is suitable for use in Western Blot and ELISA research applications.
Applications	WB, ELISA
Host/Source	Rabbit
Reactivity	Human, Mouse

PRODUCT PROPERTIES

Clonality	Polyclonal
Clone ID	
Concentration	1 mg/mL
Conjugation	Unconjugated
Purification	The antibody was affinity-purified from rabbit anti-serum by affinity-chromatography.
Dilution Range	WB 1:500-2000 ELISA 1:10000-20000
Formulation	PBS, 50% Glycerol, 0.5% BSA and 0.02% Sodium Azide.
Isotype	IgG
Storage Instruction	Store at -20°C for up to 1 year from the date of receipt, and avoid repeat freeze-thaw cycles.

TARGET INFORMATION

Gene ID	6196
Gene Symbol	RPS6KA2
Uniprot ID	KS6A2_HUMAN
Immunogen	Synthetic peptide from human protein at amino acid range: 330-400
Immunogen Region	330-400
Specificity	RPS6KA2 polyclonal antibody (Ribosomal Protein S6 Kinase Alpha-2) binds to endogenous Ribosomal Protein S6 Kinase Alpha-2 at the amino acid region 330-400.
Immunogen Sequence	



Western blot analysis of lysates from 293 cells, using Rsk-3 antibody.

Western blot analysis of hepg2, NT28 cells using Rsk-3 antibody. Antibody diluted at 500. Secondary antibody was diluted at 1:20000.