

Anti-COL17A1 antibody (481-530) (STJ98663)

STJ98663

GENERAL INFORMATION

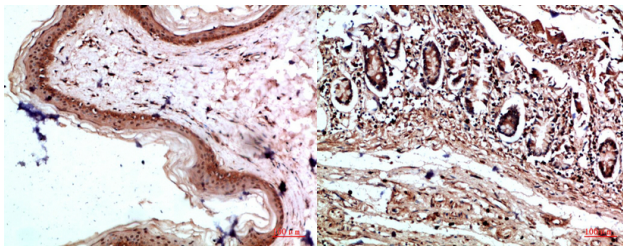
Product Type	Primary antibodies
Short Description	Rabbit polyclonal antibody anti-Collagen Alpha-1 (Xvii Chain (481-530) is suitable for use in Western Blot and ELISA research applications.
Applications	WB, ELISA
Host/Source	Rabbit
Reactivity	Human, Rat, Mouse

PRODUCT PROPERTIES

Clonality	Polyclonal
Clone ID	
Concentration	1 mg/mL
Conjugation	Unconjugated
Purification	The antibody was affinity-purified from rabbit anti-serum by affinity-chromatography.
Dilution Range	WB 1:500-2000 ELISA 1:10000-20000
Formulation	PBS, 50% Glycerol, 0.5% BSA and 0.02% Sodium Azide.
Isotype	IgG
Storage Instruction	Store at -20°C for up to 1 year from the date of receipt, and avoid repeat freeze-thaw cycles.

TARGET INFORMATION

Gene ID	1308
Gene Symbol	COL17A1
Uniprot ID	COHA1_HUMAN
Immunogen	The antiserum was produced against synthesized peptide derived from the Internal region of human COL17A1 at amino acid range 481-530
Immunogen Region	481-530
Specificity	COL17A1 polyclonal antibody (Collagen Alpha-1 (Xvii Chain) binds to endogenous Collagen Alpha-1 (Xvii Chain at the amino acid region 481-530.
Immunogen Sequence	



Immunohistochemical analysis of paraffin-embedded human-skin, antibody was diluted at 1:200

Immunohistochemical analysis of paraffin-embedded human-colon, antibody was diluted at 1:200



Western blot analysis of 3T3, hepg2 cells using Antibody diluted at 500. Secondary antibody was diluted at 1:20000

This product is suitable for in-vitro studies under the RESEARCH USE ONLY [RUO] licence. This product must not be used as for diagnostic or other medical purposes.
St John's Laboratory Ltd, Knowledge Dock Business Centre, University Way, London, E16 2RD | Tel: 0208 223 3081